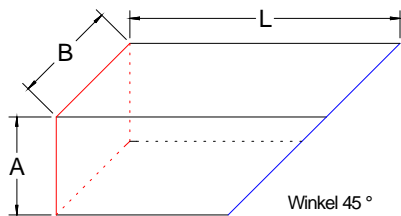
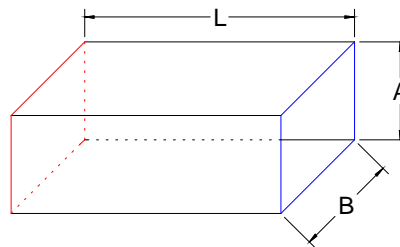


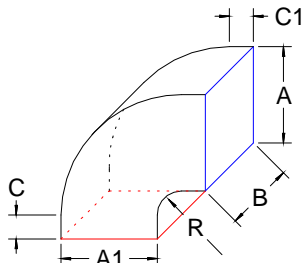
13 - Kanal abgeschrägt - SK



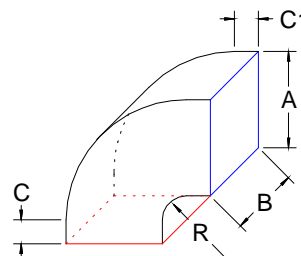
10 - Kanal - L



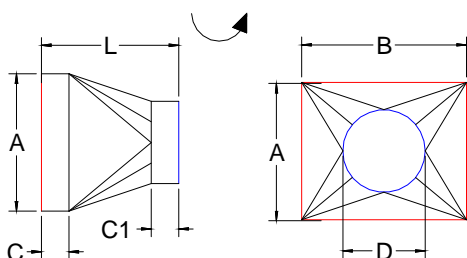
21 - Bogenübergang - BA



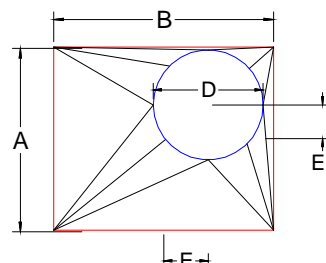
20 - Bogen - BS



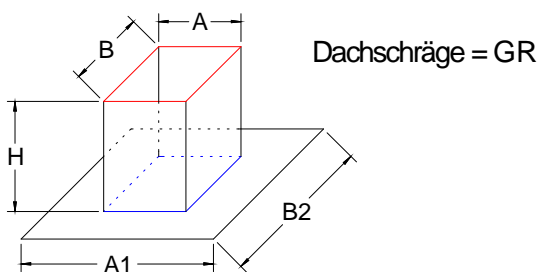
50 - Rohrübergang sym. - RS



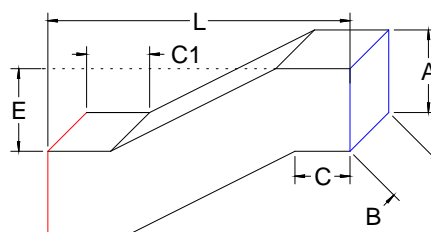
51 - Rohrübergang - RA



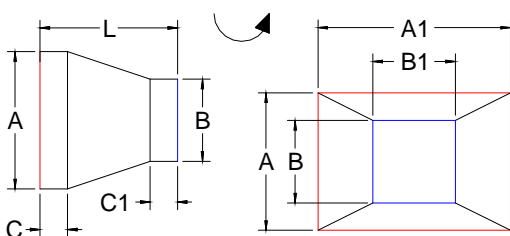
16 - Dachaufsatz - DA



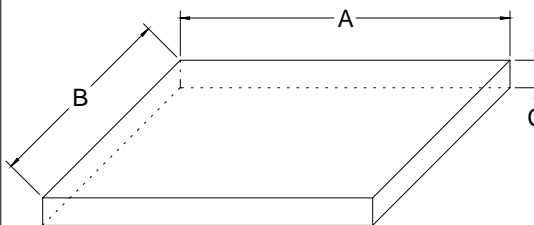
60 - Etage - ES



40 - Übergang sym. - US



1 - Boden - BO



Kanalverbindungen

|      |  |                             |
|------|--|-----------------------------|
| BO   |  | Boden                       |
| GL   |  | Glatt                       |
| SB20 |  | Profil 20                   |
| SB30 |  | Profil 30                   |
| 110  |  | Abkantung 10 mm             |
| 120  |  | Abkantung 20 mm             |
| 130  |  | Abkantung 30 mm             |
| 135  |  | Abkantung 35 mm             |
| PL   |  | Passlänge (ein Rahmen lose) |

70 - T-Stück - TG

