

# HYPERPRO

## STEERING DAMPER MOUNTING KIT

for

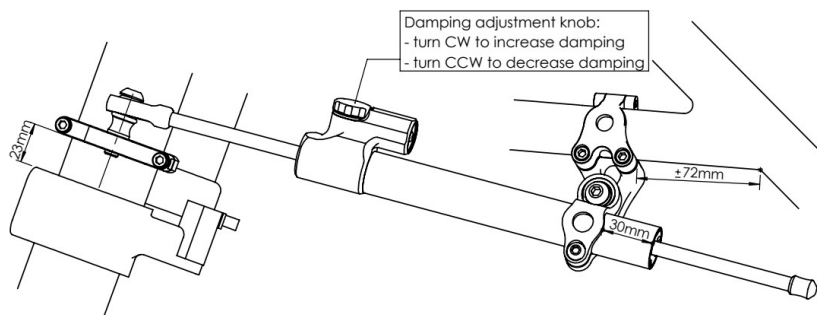
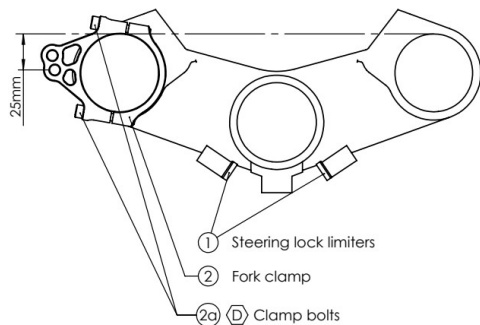
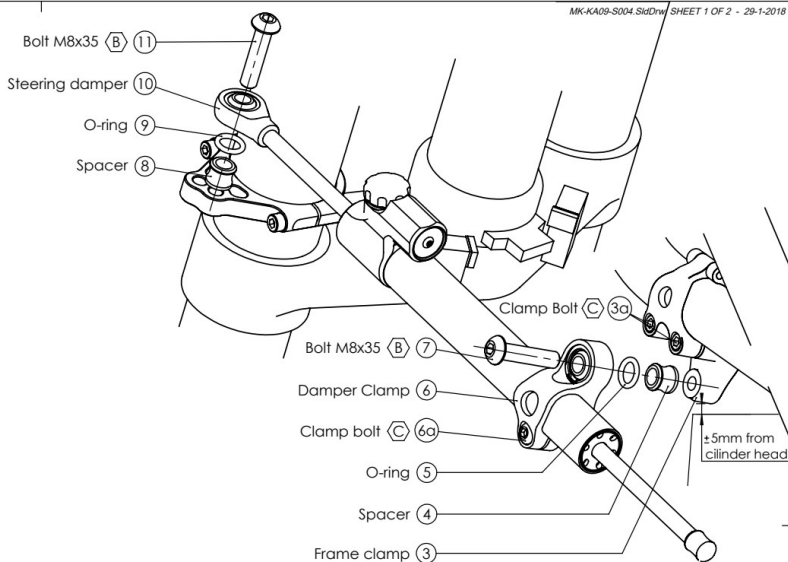
### KAWASAKI Z900RS

#### Model 2018>

#### MK-KA09-S004 PART LIST

SD stroke 160	1	-	-
Damper Clamp [MP-DB018235]	1	-	-
Fork Clamp [MP-FC0520]	1	-	-
Frame Clamp [MP-FB0005]	1	-	-
Spacer [MP-SP0001]	2	-	-
O-ring	2	-	-
M8x35 Button head	2	-	-
Steering lock limiter 3mm	2	-	-

ALL IDEAS, DESIGNS ARRANGEMENTS AND PLANS INDICATED OR REPRESENTED BY THIS DRAWING ARE OWNED BY HYPERPRO AND WERE CREATED, EVOLVED AND DEVELOPED FOR USE ON AND IN CONNECTION WITH THE SPECIFIC PROJECT. NONE SUCH IDEAS, DESIGNS, ARRANGEMENTS OR PLANS SHALL BE USED BY OR DISCLOSED TO ANY PERSON, FIRM OR CORPORATION FOR ANY PURPOSE WHATSOEVER WITHOUT THE WRITTEN PERMISSION OF HYPERPRO.



**TORQUES**

A: 5-9Nm / 44-80Lbs.In / 4.0-6.4Lbs.Ft	D: 8Nm / 70Lbs.In / 5.9Lbs.Ft
B: 14-17Nm / 124-150Lbs.In / 10.3-12.5Lbs.Ft	E: 55Nm / 486Lbs.In / 40Lbs.Ft
C: 6Nm / 53Lbs.In / 4.4Lbs.Ft	F: Factory torque (see owners manual)

# HYPERPRO

## STEERING DAMPER MOUNTING KIT

for

### KAWASAKI Z900RS

#### Model 2018>

#### MK-KA09-S004 INSTALLATION INSTRUCTIONS

#### In general:

HYPERPRO can not be held responsible in any way for any form of physical, material, financial or other damage arising from use, assembly or overhaul of HYPERPRO products. HYPERPRO reserves the right to make changes without prior notice.

This product is ONLY TO BE INSTALLED BY A PROFESSIONAL MECHANIC. This product is only to be used for the motorcycle brand, model and year stated specifically on top of the pages of this manual.

DO NOT attempt to install this product on motorcycles from any different brand, model and/or year than stated on the pages of this manual. DO NOT use this kit for cars, boats, jet skis, snowmobiles, ATV's, aircraft, hovercrafts or any other vehicle and/or purpose.

HYPERPRO steering dampers are FOR RACE USE ONLY, NOT FOR HIGHWAY USE!

#### Before installation:

- Please read the entire manual carefully before starting the installation!
- Check if you have all the tools required. Good tools are a must.
- Protect your bike at the most important places in and around the work area (e.g. tank, fairing, frame, etc.), with a blanket, towel or similar.

#### During installation:

- Check all operations and parts carefully before, during and after performing each step.
- Clean all surfaces that are required for fitting parts together or for applying self adhesives or loctite, thoroughly with contact cleaner or another degreaser, unless otherwise stated.
- Be careful not to damage or scratch any part of your bike.
- ALWAYS work relaxed and concentrated!! It is very easy to damage something or make a mistake.

#### After installation:

- Check and make sure that there is no contact between any part of the steering damper kit and any part of the motorcycle. The kit should not hit anything. Steering movement should not be limited by the steering damper. If the steering movement is limited, adjust the position of the tube in the clamp until steering movement is normal again. Do not forget to tighten the clamp bolt again!
- ALWAYS check the steering movement and feeling before each ride!
- FIRST RIDES: Start with the damper turned fully open (turn adjuster knob fully counter clockwise). Start adjusting in between rides with steps of MAX. 2 CLICKS (0.25 TURN) EACH TIME, until the damper is working satisfactory for your riding style.
- NEVER USE MAXIMUM SETTING, ALWAYS OPEN AT LEAST 2 CLICKS (0.25 TURN).
- WARNING ! DAMPER HAS AN ACTIVE / SPEEDSENSITIVE DAMPING SYSTEM;
  - Steering with NORMAL MOVEMENT should be FREE !!
  - Steering with FAST MOVEMENT should be CONTROLLED BY DAMPER !!
- HYPERPRO uses a special seal to reduce friction. The seal uses an oil film to work properly. It is normal that some oil can appear on the pistonrod.
- Damper works with oil: DAMPING CAN BE HARDER AT LOWER TEMPERATURES!

#### Step 1: install the steering lock limiters

Install the limiters using:  
 - Steering lock limiters, self-adhesive (1)

Clean and degrease the left and right steering lock surfaces on the lower triple clamp (see picture). Stick the limiters on the cleaned surfaces, so the max steering angle will be limited by a few degrees.

#### Step 2: install the fork clamp

Install the fork clamp using:  
 - Fork clamp (2)

Disassemble the fork clamp (2). Reassemble the clamp around the left fork leg as shown on page 1. Make sure the correct side is facing up. Set the height and angle as shown in the pictures and tighten the bolts (2a) lightly and evenly to a torque of approx. 8Nm/70Lbs.In/5.9Lbs.Ft.

#### Step 3: install the frame- and damper bracket

Install the brackets using:  
 - Frame clamp (3)  
 - 1x Spacer (4)  
 - 1x O-ring (5)  
 - Damper clamp (6)  
 - 1x Bolt M8x35 button head (7)

Loosen and remove the frame clamp bolts (3a). Place the frame clamp (3) around the left frame tube above the cylinder head and insert the clamp bolts (3a). Set the distance and angle as shown in the pictures on page 1 and tighten the bolts (3a) lightly and evenly to a torque of approx. 6Nm/53Lbs.In/4.4Lbs.Ft.

Mount the damper clamp (6) to the frame clamp (3) using the spacer (4), o-ring (5) and bolt (7). Tighten the bolt to a torque of approx. 14-17Nm/124-150Lbs.In/10.3-12.5Lbs.Ft.

#### Step 4: install the steering damper

Install the steering damper using:  
 - 1x Spacer (8)  
 - 1x O-ring (9)  
 - Steering damper, stroke 160 (10)  
 - 1x Bolt M8x35 button head (11)

Shove the damper (14), with the knob end first, through the damper clamp (6) until the distance of 30mm stated on page 1 is reached, angle the adjuster body slightly outward and tighten the clamp bolt (6a) to a torque of approx. 6Nm/53Lbs.In/4.4Lbs.Ft. Use the spacer (8), O-ring (9) and M8 bolt (11) to mount the damper ball-joint to the correct hole in the fork clamp (2) and tighten to a torque of approx. 14-17Nm/124-150Lbs.In/10.3-12.5Lbs.Ft.

Check if the damper does not touch anything (e.g. frame or radiator) when steering from left to right. Check if the steering angle is not limited by the steering damper. Modify the positions of the brackets if necessary to improve, do not forget to re-tighten the bolts!