

# HYPHERPRO

## STEERING DAMPER MOUNTING KIT

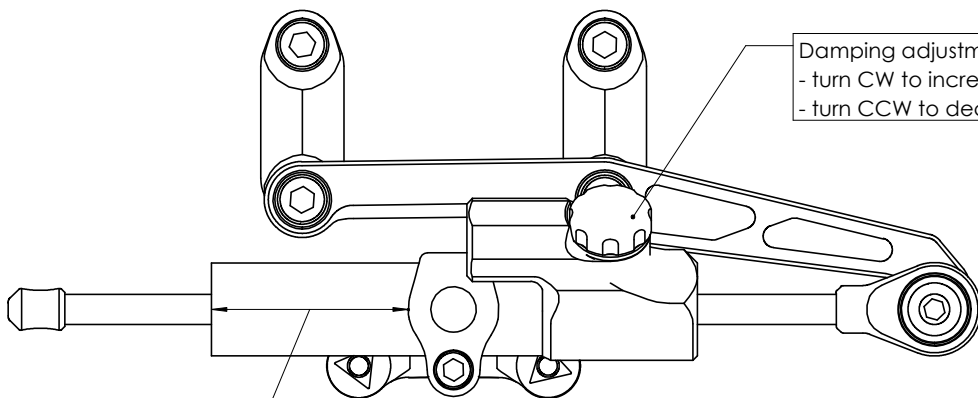
for

**Benelli 752 S  
Model 2019>**

### MK-BE07-T001 PART LIST

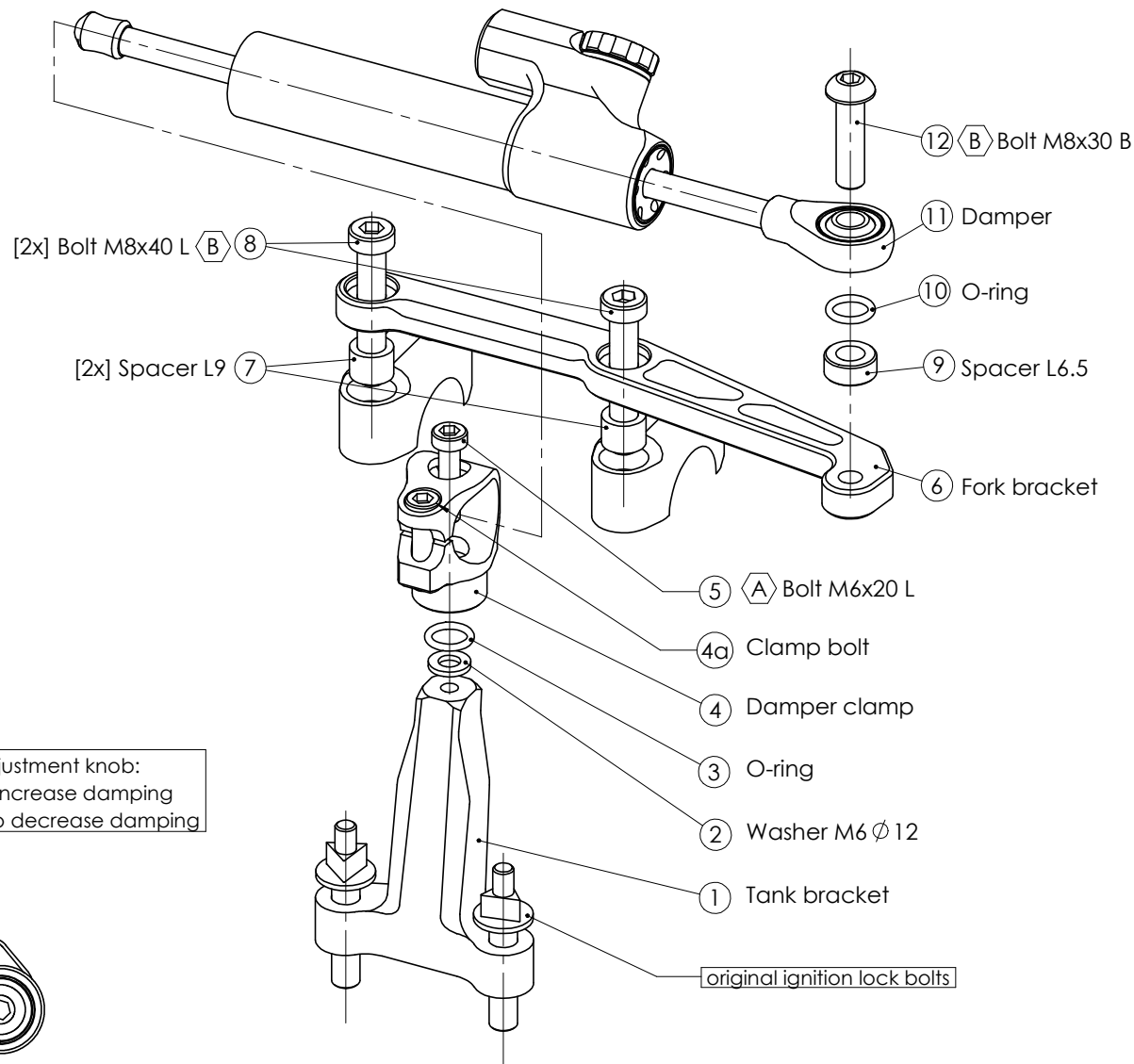
SD stroke 75	1	Washer M6 $\phi$ 12	1
Damper Clamp [MP-DB0003]	1	Spacer L9 [MP-SP081309]	2
O-Ring 10x2	2	Spacer L6.5 [MP-SP0029]	1
Fork Bracket [MP-FOMK105]	1	-	-
Tank Bracket [MP-TAMK93]	1	-	-
M6x20 Low head	1	-	-
M8x30 Button head	1	-	-
M8x40 Low head 8.8	2	-	-

ALL IDEAS, DESIGNS ARRANGEMENTS AND PLANS INDICATED OR REPRESENTED BY THIS DRAWING ARE OWNED BY HYPERPRO AND WERE CREATED, EVOLVED AND DEVELOPED FOR USE ON AND IN CONNECTION WITH THE SPECIFIC PROJECT. NONE SUCH IDEAS, DESIGNS, ARRANGEMENTS OR PLANS SHALL BE USED BY OR DISCLOSED TO ANY PERSON, FIRM OR CORPORATION FOR ANY PURPOSE WHATSOEVER WITHOUT THE WRITTEN PERMISSION OF HYPERPRO.



Damping adjustment knob:  
- turn CW to increase damping  
- turn CCW to decrease damping

Distance X = 52mm



#### \* TORQUES

A: 5-9Nm / 44-80Lbs.In / 4.0-6.4Lbs.Ft  
B: 14-17Nm / 124-150Lbs.In / 10.3-12.5Lbs.Ft  
C: 6Nm / 53Lbs.In / 4.4Lbs.Ft

D: 8Nm / 70Lbs.In / 5.9Lbs.Ft  
E: 55Nm / 486Lbs.In / 40Lbs.Ft  
F: Factory torque (see owners manual)

# HYPERPRO

## STEERING DAMPER MOUNTING KIT

for

**Benelli 752 S  
Model 2019>**

### **MK-BE07-T001 INSTALLATION INSTRUCTIONS**

#### **In general:**

HYPERPRO can not be held responsible in any way for any form of physical, material, financial or other damage arising from use, assembly or overhaul of HYPERPRO products. HYPERPRO reserves the right to make changes without prior notice.

This product is ONLY TO BE INSTALLED BY A PROFESSIONAL MECHANIC.

This product is only to be used for the motorcycle brand, model and year stated specifically on top of the pages of this manual.

DO NOT attempt to install this product on motorcycles from any different brand, model and/or year than stated on the pages of this manual.

DO NOT use this kit for cars, boats, jet skis, snowmobiles, ATV's, aircraft, hovercrafts or any other vehicle and/or purpose.

HYPERPRO steering dampers are FOR RACE USE ONLY, NOT FOR HIGHWAY USE!

#### **Before installation:**

- Please read the entire manual carefully before starting the installation!
- Check if you have all the tools required. Good tools are a must.
- Protect your bike at the most important places in and around the work area (e.g. tank, fairing, frame, etc.), with a blanket, towel or similar.

#### **During installation:**

- Check all operations and parts carefully before, during and after performing each step.
- Clean all surfaces that are required for fitting parts together or for applying self adhesives or loctite, thoroughly with contact cleaner or another degreaser, unless otherwise stated.
- Be careful not to damage or scratch any part of your bike.
- ALWAYS work relaxed and concentrated!! It is very easy to damage something or make a mistake.

#### **After installation:**

- Check and make sure that there is no contact between any part of the steering damper kit and any part of the motorcycle. The kit should not hit anything. Steering movement should not be limited by the steering damper. If the steering movement is limited, adjust the position of the tube in the clamp until steering movement is normal again. Do not forget to tighten the clamp bolt again!
- ALWAYS check the steering movement and feeling before each ride !
- FIRST RIDES: Start with the damper turned fully open (turn adjuster knob fully counter clockwise). Start adjusting in between rides with steps of MAX. 2 CLICKS (0.25 TURN) EACH TIME, until the damper is working satisfactory for your riding style.
- NEVER USE MAXIMUM SETTING, ALWAYS OPEN AT LEAST 2 CLICKS (0.25 TURN).
- WARNING ! DAMPER HAS AN ACTIVE / SPEEDSENSITIVE DAMPING SYSTEM;
  - Steering with NORMAL MOVEMENT should be FREE !!
  - Steering with FAST MOVEMENT should be CONTROLLED BY DAMPER !!
- HYPERPRO uses a special seal to reduce friction. The seal uses an oil film to work properly. It is normal that some oil can appear on the pistonrod.
- Damper works with oil: DAMPING CAN BE HARDER AT LOWER TEMPERATURES!

#### **Step 1: install the tank bracket**

Install the tank bracket using:

- Tank bracket (1)

Remove the ignition lock cover by removing the 2 bolts.

Remove the 2 washers and remove the original ignition lock bolts.

Replace the original bracket with the supplied tank bracket (1) and install using the original bolts.

Reinstall all the other parts in the reversed order.

#### **Step 2: install the damper clamp**

Install the damper clamp using:

- Washer M6  $\phi$  12 (2)
- O-Ring (3)
- Damper clamp (4)
- Bolt M6x20 Low head (5)

Mount the damper clamp (4) to the tank bracket (1) using the washer (2), the O-ring (3) and the M6 bolt (5). Tighten the bolt to a torque of approx. 5-9Nm/44-80Lbs.In/4.0-6.4Lbs.Ft.

#### **Step 3: install the fork bracket**

Install the fork bracket using:

- Fork bracket (6)
- 2x spacer L9 (7)
- 2x Bolt M8x40 (8)

Hold the handlebars, then loosen and remove the two handlebar clamp bolts closest to the tank. Place the spacers (7) in the pockets of the handlebar clamps. Install the fork bracket (6) using the two M8x40 bolts (8). Make sure the clamp gaps are even and tighten the bolts evenly to a torque of approx. 14-17Nm/124-150Lbs.In/10.3-12.5Lbs.Ft.

#### **Step 4: installing the steering damper**

Install the steering damper using:

- Spacer L6.5 (9)
- 1x O-ring (10)
- Steering damper, stroke 75 (11)
- Bolt M8x30 button head (12)

Ensure that the clamp bolt (4a) of the damper clamp is pointing to the rear.

Shove the damper (11), with the end knob-side first, through the clamp until the ball-joint can be fitted to the fork bracket. Use the spacer (9), O-ring (10) and M8 bolt (12) to mount the ball-joint to the fork bracket and tighten to a torque of approx. 14-17Nm/124-150Lbs.In/10.3-12.5Lbs.Ft.

Position the damper tube until the distance "X" stated on page 1 is reached, then tighten the M6 clamp bolt (4a) to a torque of approx. 6Nm/53Lbs.In/4.4Lbs.Ft.

Check if the damper is level horizontally and aligned to the bike.

Loosen the bolts and reposition the brackets if necessary to improve alignment.

Check if the damper does not touch anything (e.g. tank) when steering from left to right.

Check if the bike can make it's full steering angle from left to right.