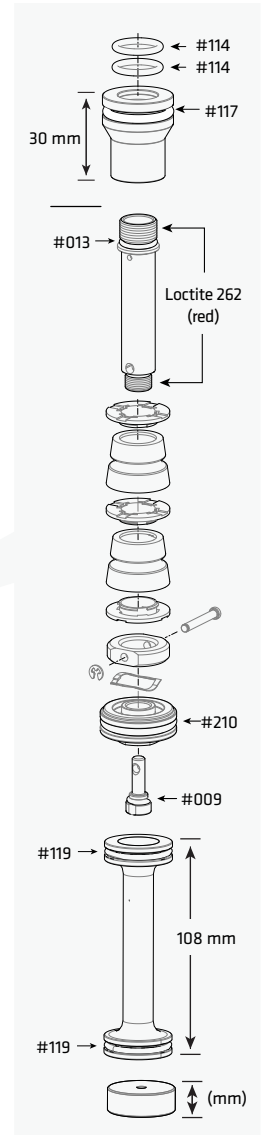
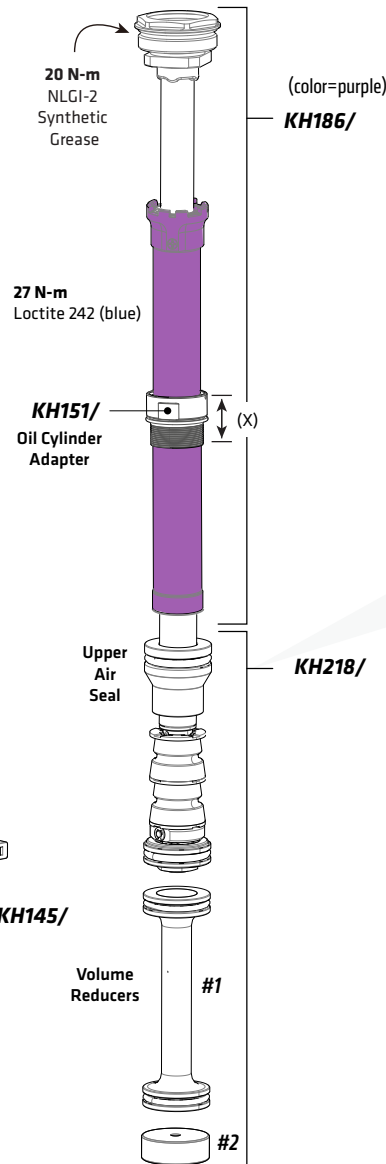
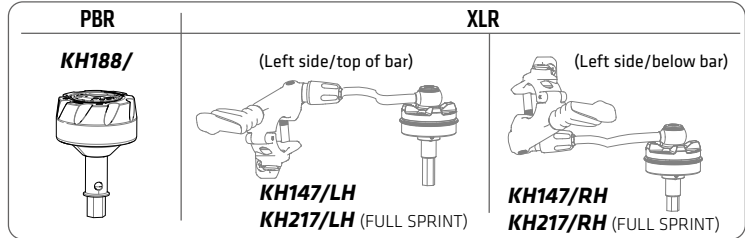
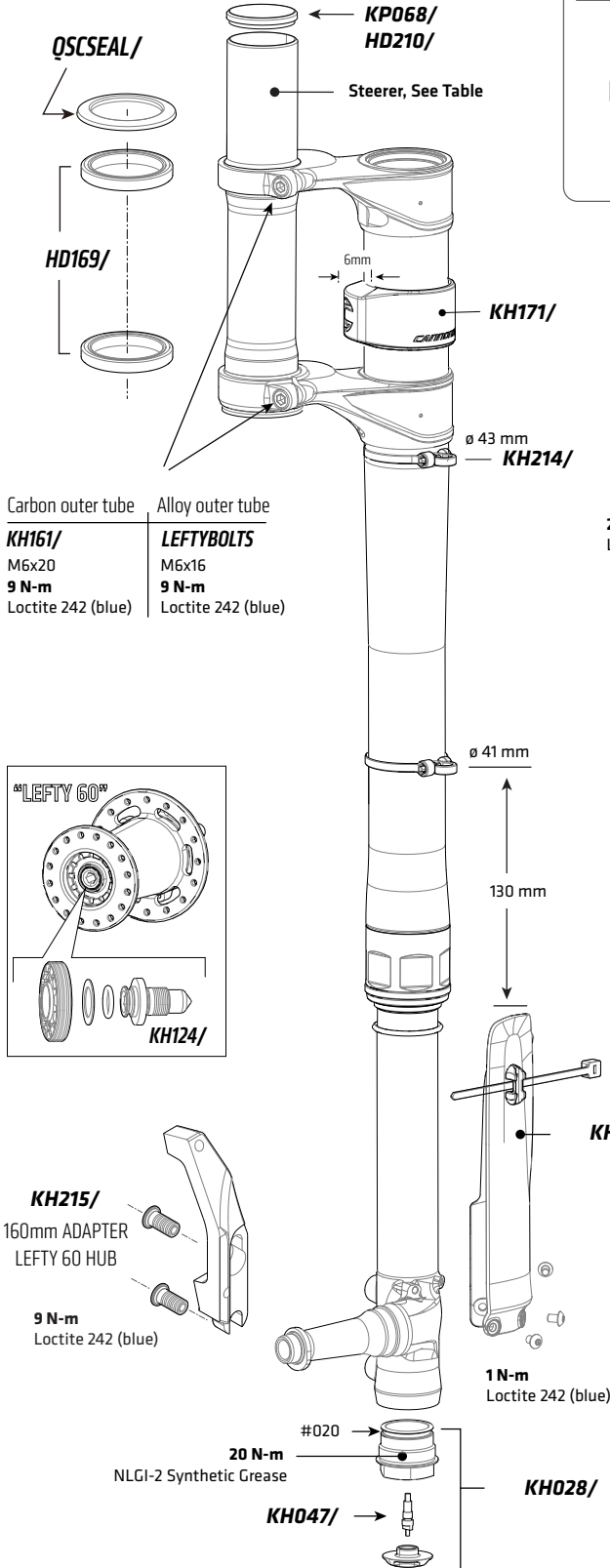


LEFTY 2.0-PBR/XLR 100 27.5"

RECOMMENDED SAG	25-30 mm
TRAVEL LENGTH	100 mm
MANUAL RESET LENGTH	15 mm +/- 3
PRESSURE LIMITS	MINIMUM 50 Psi, MAXIMUM 225 Psi
OFFSET	50 mm
INTENDED USE	ASTM CONDITION 3, XC Cross-Country

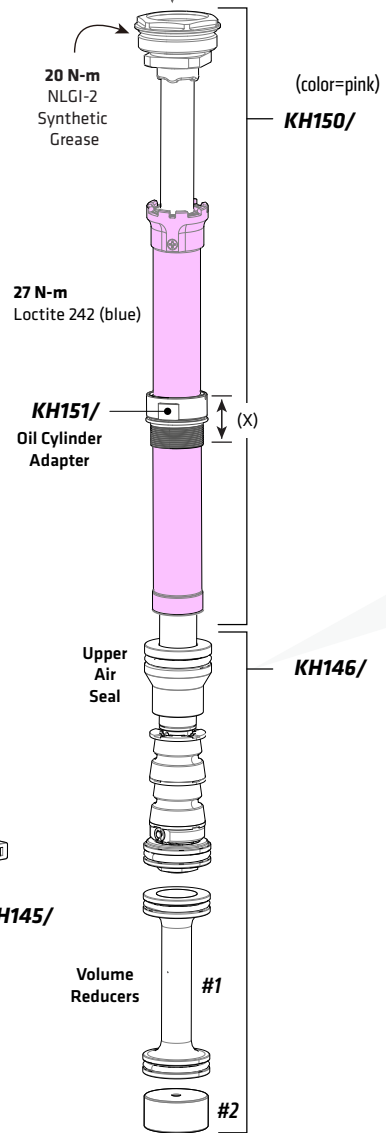
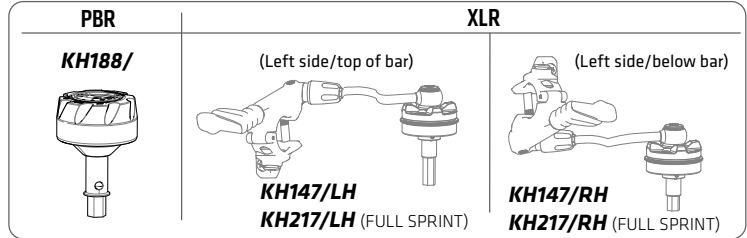
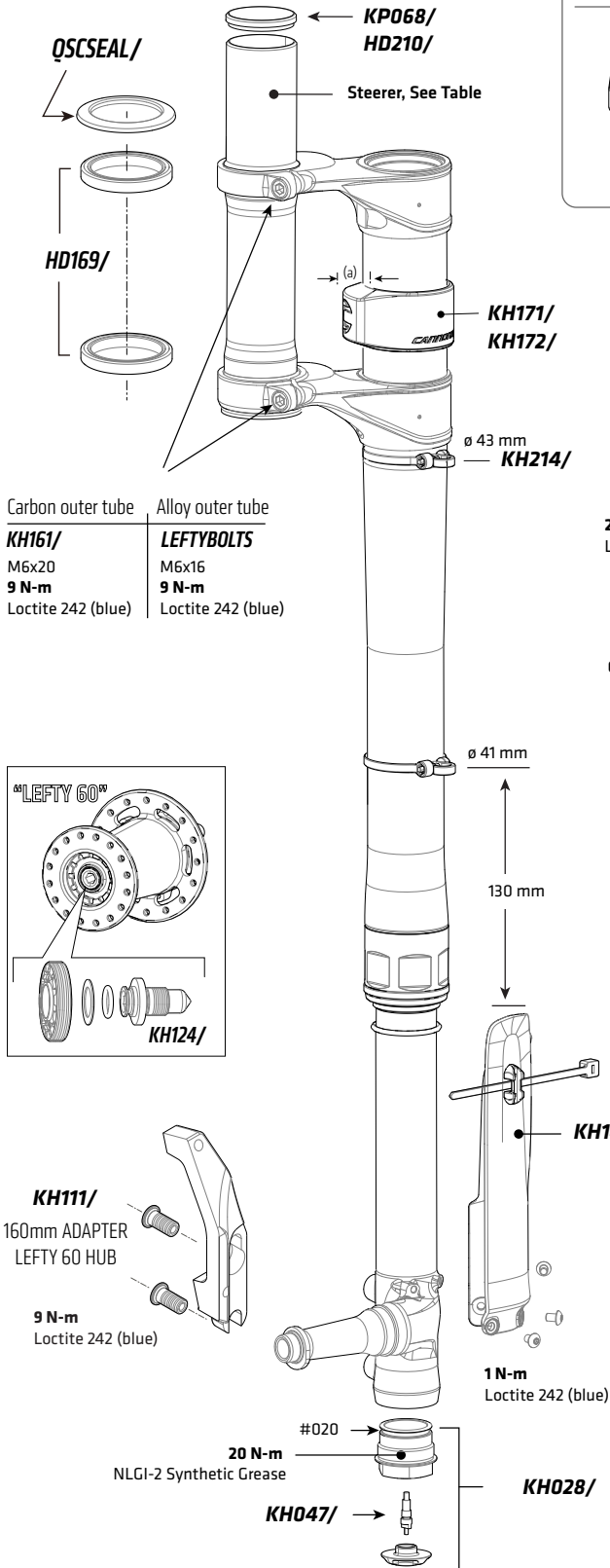


BIKE SIZE	XS/S	M	L	XL
TRAVEL REDUCER	--	--	--	--
UPPER AIR SEAL LENGTH	30 mm	--	--	--
OIL CYLINDER ADAPTER LENGTH (X)	29 mm	42 mm	--	--
#1 VOLUME REDUCER	108 mm	--	--	--
#2 VOLUME REDUCER	10 mm	25 mm	--	--
HEADTUBE LENGTH	97mm	110 mm	--	--
FRAME BUMPER SIZE	6 mm	--	--	--

CODE	TELESCOPE	COMMENT
KH214/	KIT,BAND CLAMPS, CABLE GUIDE	Contains multiple clamp types/size , select appropriate. Use 43mm & 41mm.
KH171/	KIT,FRAME BUMPER,LEFTY 6MM	
KH145/	KIT GUARD LEFTY HYB 32 SHORT	
KH161/	KIT,CLAMP BOLTS 20mm	For carbon outer tube
LEFTYBOLTS/	KIT,BOLTS,LEFTY CALIPER/CLAMP	For alloy outer tube
KH215/	KIT,ADAPTER,	
CODE	DAMPER	COMMENT
KH186/	KIT DAMPER, LEFTY 2.0, 100 27	<i>Replacement cartridge also requires: KH146/ and KH151/ And choice of PBR or XLR control : KH149/ or KH147/LH , or KH147/RH</i>
KH218/	KIT SOLO AIR PISTON LEFTY 2.0 100 27	
KH151/	KIT ADAPT OIL CYLINDER 32 /097/110/122/134	Kit includes multiple adapters, measure headtube to determine correct adapter; DO NOT INTERCHANGE.
KH188/	KIT PBR KNOB	
KH147/LH	KIT XLR LEVER LEFT HAND UPPER	Left H-bar lever, positions top bar
KH147/RH	KIT XLR LEVER RIGHT HAND UPPER	Left H-bar lever, positions lower bar
KH217/LH	KIT XLR LEVER LEFT HAND UPPER	Full Sprint
KH217/RH	KIT XLR LEVER RIGHT HAND UPPER	Full Sprint
KH125/A	KIT,SEALS,100HR TUNE,SUPERMAX PBR/XLR	
KH076/	KIT REDUCER SOLO AIR TUNE	
CODE	STEERER/HEADSET	COMMENT
KH197/097	KIT,STEERER,L20 THICK FLANGE,097	For 97 mm Headtube Length
KH197/110	KIT,STEERER,L20 THICK FLANGE,110	For 109 mm Headtube Length
KH197/122	KIT,STEERER,L20 THICK FLANGE,122	For 122 mm Headtube Length
KH197/134	KIT,STEERER,L20 THICK FLANGE,134	For 134mm Headtube Length
QSCSEAL/	KIT,SEAL,UPPER BEARING,60MM OD	
HD169/	KIT,BEARINGS, HEADSET - 2	includes 2 bearings
KP068/ or HD210/	KIT, STEERER CAP	
CODE	WHEEL HUB	COMMENT
KH124/	KIT,AXLE CAP AND BOLT - LEFTY 60	
KB61805/	INNER HUB BEARING	
KB61902/	OUTER HUB BEARING	
CODE	SERVICE TOOLS	COMMENT
KT020/	KIT, TOOL,,LEFTY INSTALL	Install/remove steerer, not pictured
KH127/	KIT, TOOL OUTER CAP 36MM	Install/remove outer cap
KH198/	KIT, TOOL CASTLE SLIDER 40MM	Install/remove damping cartridge
KH135/	KIT, TOOL,SHAFT CLAMP, 16MM	Install/remove air piston assy.
KH136/	KIT, TOOL,BULLET, 16MM	Install upper air seal assy.
KH057/	KIT, TOOL,LEFTY THREAD REPAIR	Repair spindle threads, not pictured
QCTL108/	KIT, TOOL, TRUING AXLE	
KH090/	KIT, TOOL, XLR BLEED	For XLR only

LEFTY 2.0-PBR/XLR 100 29"

RECOMMENDED SAG	25-30 mm
TRAVEL LENGTH	100 mm
MANUAL RESET LENGTH	35 mm +/- 3
PRESSURE LIMITS	MINIMUM 50 Psi, MAXIMUM 225 Psi
OFFSET	55 mm
INTENDED USE	ASTM CONDITION 3, XC Cross-Country

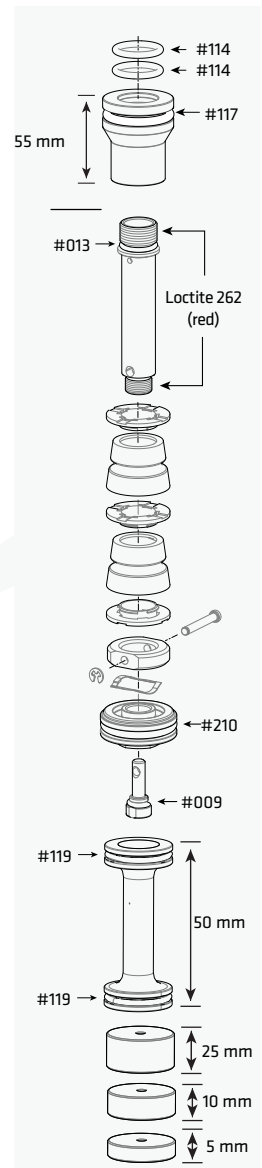
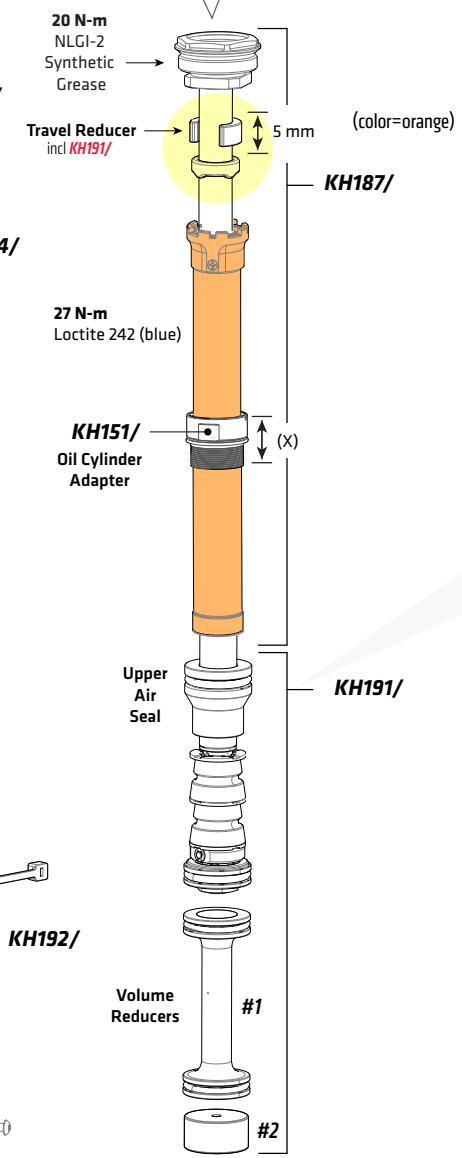
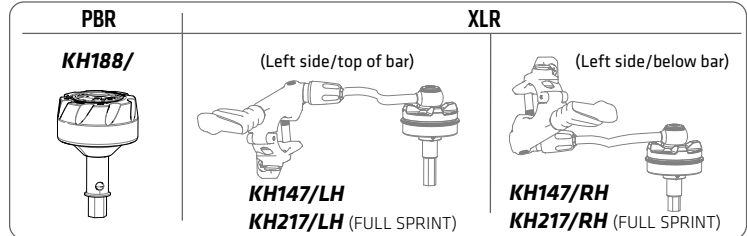
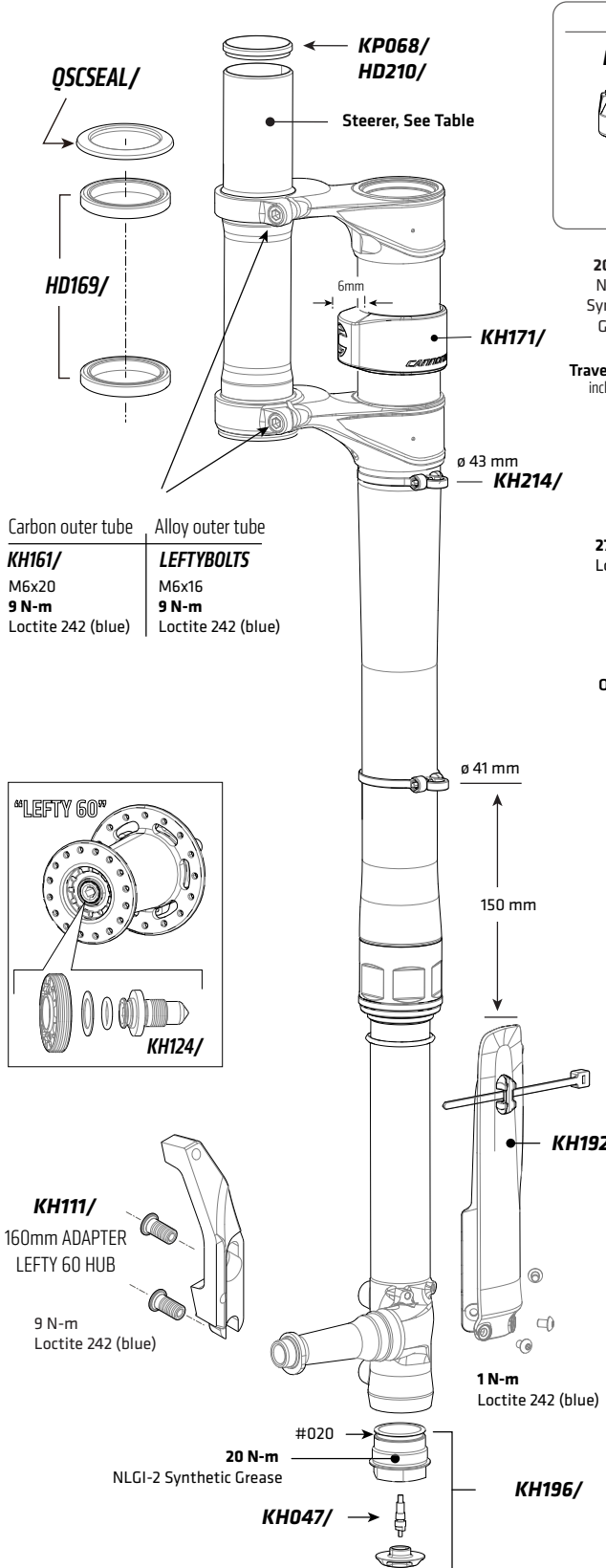


BIKE SIZE	S/M	L	XL
UPPER AIR SEAL LENGTH		30 mm	
OIL CYLINDER ADAPTER LENGTH (X)	29 mm	42 mm	54 mm
#1 VOLUME REDUCER		135 mm	
#2 VOLUME REDUCER	--	10 mm	25 mm
HEADTUBE LENGTH	97 mm	110mm	122 mm
FRAME BUMPER SIZE		6 mm	

CODE	TELESCOPE	COMMENT
KH214/	KIT,BAND CLAMPS, CABLE GUIDE	Contains multiple clamp types/size , select appropriate. Use 43mm & 41mm.
KH171/	KIT,FRAME BUMPER,LEFTY 6MM	
KH145/	KIT GUARD LEFTY HYB 32 SHORT	
KH161/	KIT,CLAMP BOLTS 20mm	carbon outer tube
LEFTYBOLTS/	KIT,BOLTS,LEFTY CALIPER/CLAMP	alloy outer tube
KH111/	KIT,ADAPTER,HYB 36,LEFTY 60 HUB 180	
CODE	DAMPER	COMMENT
KH188/	KIT PBR KNOB	
KH150/	KIT DAMPER FSI 29	<i>Replacement cartridge also requires: KH146/ and KH151/ And choice of PBR or XLR control : KH149/ or KH147/LH , or KH147/RH</i>
KH146/	KIT SOLO AIR PISTON LEFTY 2.0 100 29	
KH151/	KIT ADAPT OIL CYLINDER 32 /097/110/122/134	Kit includes multiple adapters, measure headtube to determine correct adapter; DO NOT INTERCHANGE.
KH047/	KIT,VALVE CORES /10	
KH028/	KIT, SCHRADER PLUG	
KH147/LH	KIT XLR LEVER LEFT HAND UPPER	Left H-bar lever, positions top bar
KH147/RH	KIT XLR LEVER RIGHT HAND UPPER	Left H-bar lever, positions lower bar
KH125/A	KIT,SEALS,100HR TUNE,SUPERMAX PBR/XLR	
KH076/	KIT REDUCER SOLO AIR TUNE	
CODE	STEERER/HEADSET	COMMENT
KH197/097	KIT,STEERER,L20 THICK FLANGE,097	For 97 mm Headtube Length
KH197/110	KIT,STEERER,L20 THICK FLANGE,110	For 109 mm Headtube Length
KH197/122	KIT,STEERER,L20 THICK FLANGE,122	For 122 mm Headtube Length
KH197/134	KIT,STEERER,L20 THICK FLANGE,134	For 134mm Headtube Length
QSCSEAL/	KIT,SEAL,UPPER BEARING,60MM OD	
HD169/	KIT,BEARINGS, HEADSET - 2	includes 2 bearings
KP068/ or HD210/	KIT, STEERER CAP	
CODE	WHEEL HUB	COMMENT
KH124/	KIT,AXLE CAP AND BOLT - LEFTY 60	
KB61805/	INNER HUB BEARING	
KB61902/	OUTER HUB BEARING	
CODE	SERVICE TOOLS	COMMENT
KT020/	KIT, TOOL,LEFTY INSTALL	Install/remove steerer, not pictured
KH127/	KIT, TOOL OUTER CAP 36MM	Install/remove outer cap
KH198/	KIT, TOOL CASTLE SLIDER 40MM	Install/remove damping cartridge
KH135/	KIT,TOOL,SHAFT CLAMP, 16MM	Install/remove air piston assy.
KH136/	KIT,TOOL,BULLET, 16MM	Install upper air seal assy.
KH057/	KIT, TOOL,LEFTY THREAD REPAIR	Repair spindle threads, not pictured
QCTL108/	KIT, TOOL, TRUING AXLE	
KH090/	KIT, TOOL, XLR BLEED	For XLR only

LEFTY 2.0-PBR/XLR 120 29" AND 27.5+"

RECOMMENDED SAG	25-30 mm
TRAVEL LENGTH	120 mm
MANUAL RESET LENGTH	35 mm +/- 3
PRESSURE LIMITS	MINIMUM 50 Psi, MAXIMUM 225 Psi
OFFSET	55 mm
INTENDED USE	ASTM CONDITION 3, XC Cross-Country



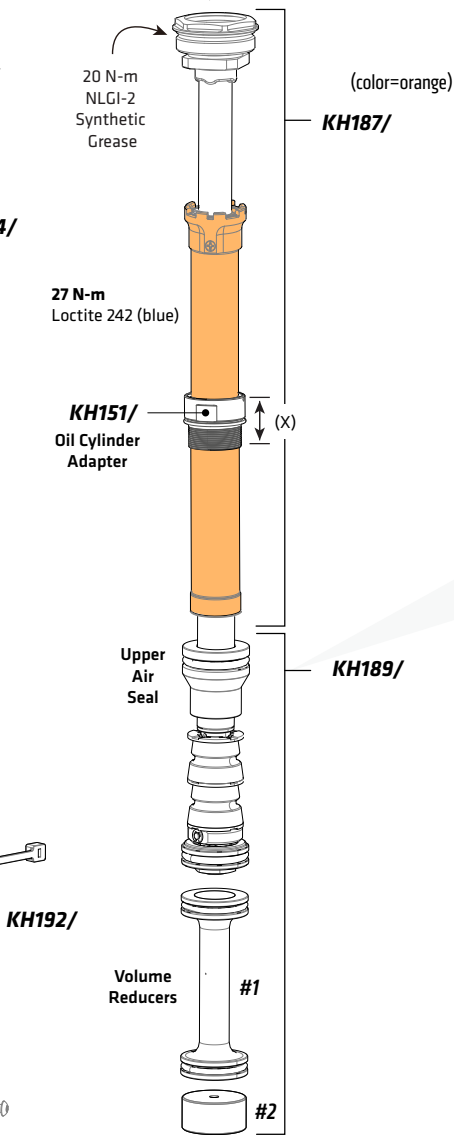
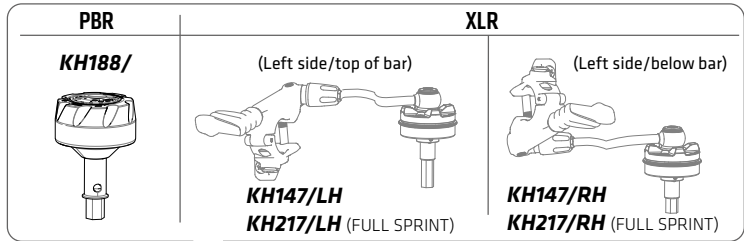
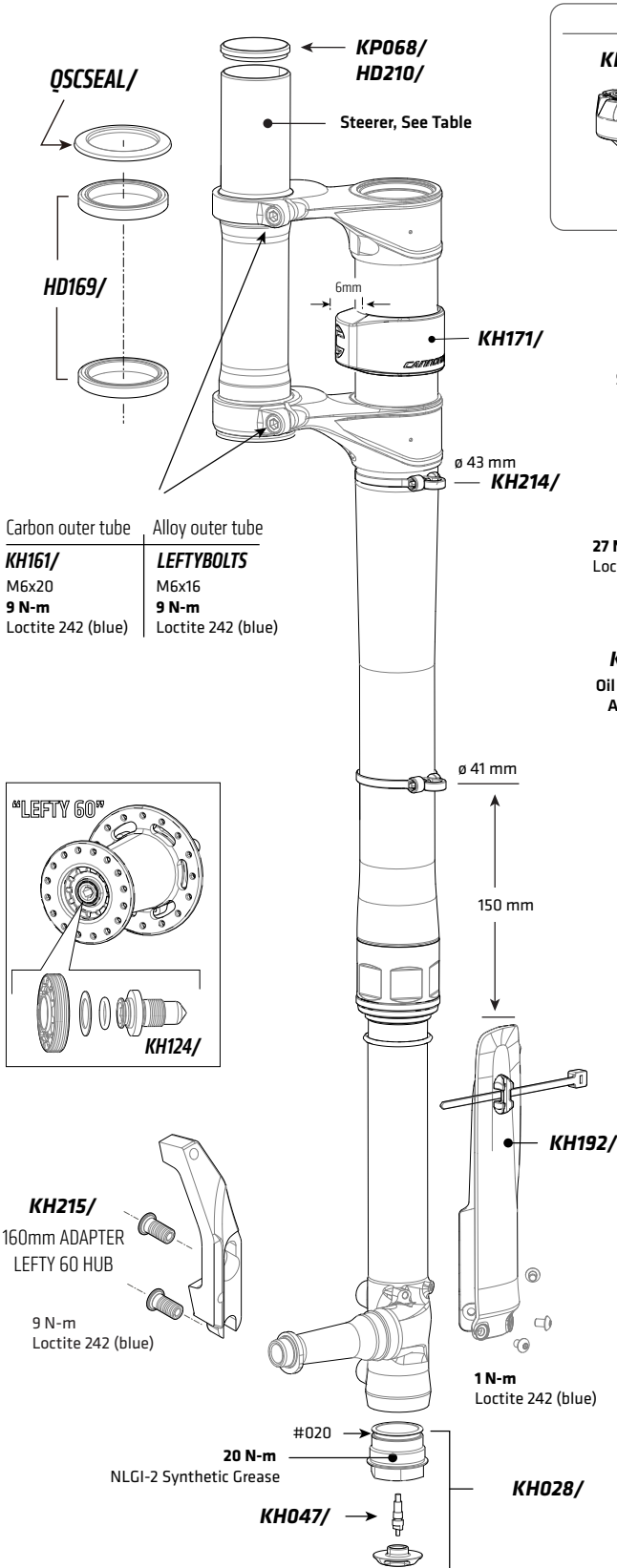
Carbon outer tube	Alloy outer tube
KH161/ M6x20 9 N-m Loctite 242 (blue)	LEFTYBOLTS M6x16 9 N-m Loctite 242 (blue)

	BIKE SIZE	S	M	L	XL
UPPER AIR SEAL LENGTH		55 mm			
OIL CYLINDER ADAPTER LENGTH (X)		29 mm	42 mm	54 mm	65 mm
#1 VOLUME REDUCER		--	--	50 mm	50 mm
#2 VOLUME REDUCER		10 mm + 5 mm	25 mm + 5 mm	--	10 mm
HEADTUBE LENGTH		97 mm	110 mm	122 mm	134 mm
FRAME BUMPER SIZE		6 mm			

CODE	TELESCOPE	COMMENT
KH214/	KIT,BAND CLAMPS, CABLE GUIDE	Contains multiple clamp types/size , select appropriate. Use 43mm & 41mm.
KH171/	KIT,FRAME BUMPER,LEFTY 6MM	
KH192/	KIT GUARD LEFTY HYB 32 LONG	
KH161/	KIT,CLAMP BOLTS 20mm	For carbon outer tube
LEFTYBOLTS/	KIT,BOLTS,LEFTY CALIPER/CLAMP	For alloy outer tube
KH111/	KIT,ADAPTER, LEFTY 60, 160	
CODE	DAMPER	COMMENT
KH187/	KIT DAMPER, LEFTY 2.0, 120,27	<i>Replacement cartridge also requires: KH146/ and KH151/ And choice of PBR or XLR control : KH149/ or KH147/LH , or KH147/RH</i>
KH191/	KIT SOLO AIR PISTON 120 29/275+	
KH151/	KIT ADAPT OIL CYLINDER 32 /097/110/122/134	Kit includes multiple adapters, measure headtube to determine correct adapter; DO NOT INTERCHANGE.
KH188/	KIT PBR KNOB	
KH147/LH	KIT XLR LEVER LEFT HAND UPPER	Left H-bar lever, positions top bar
KH147/RH	KIT XLR LEVER RIGHT HAND UPPER	Left H-bar lever, positions lower bar
KH217/LH	KIT XLR LEVER LEFT HAND UPPER	Full Sprint , positions top bar
KH217/RH	KIT XLR LEVER RIGHT HAND UPPER	Full Sprint, positions lower bar
KH125/A	KIT,SEALS,100HR TUNE,SUPERMAX PBR/XLR	
KH076/	KIT REDUCER SOLO AIR TUNE	
CODE	STEERER/HEADSET	COMMENT
KH197/097	KIT,STEERER,L20 THICK FLANGE,097	For 97 mm Headtube Length
KH197/110	KIT,STEERER,L20 THICK FLANGE,110	For 109 mm Headtube Length
KH197/122	KIT,STEERER,L20 THICK FLANGE,122	For 122 mm Headtube Length
KH197/134	KIT,STEERER,L20 THICK FLANGE,134	For 134mm Headtube Length
QSCSEAL/	KIT,SEAL,UPPER BEARING,60MM OD	
HD169/	KIT,BEARINGS, HEADSET - 2	includes 2 bearings
KP068/ or HD210/	KIT, STEERER CAP	
CODE	WHEEL HUB	COMMENT
KH124/	KIT,AXLE CAP AND BOLT - LEFTY 60	
KB61805/	INNER HUB BEARING	
KB61902/	OUTER HUB BEARING	
CODE	SERVICE TOOLS	COMMENT
KT020/	KIT, TOOL,LEFTY INSTALL	Install/remove steerer, not pictured
KH127/	KIT, TOOL OUTER CAP 36MM	Install/remove outer cap
KH198/	KIT, TOOL CASTLE SLIDER 40MM	Install/remove damping cartridge
KH135/	KIT,TOOL,SHAFT CLAMP, 16MM	Install/remove air piston assy.
KH136/	KIT,TOOL,BULLET, 16MM	Install upper air seal assy.
KH057/	KIT, TOOL,LEFTY THREAD REPAIR	Repair spindle threads, not pictured
QCTL108/	KIT, TOOL, TRUING AXLE	
KH090/	KIT, TOOL, XLR BLEED	For XLR only

LEFTY 2.0-PBR/XLR 120 27.5"

RECOMMENDED SAG	25-30 mm
TRAVEL LENGTH	120 mm
MANUAL RESET LENGTH	25 mm +/- 3
PRESSURE LIMITS	MINIMUM 50 Psi, MAXIMUM 225 Psi
OFFSET	50 mm
INTENDED USE	ASTM CONDITION 3, XC Cross-Country

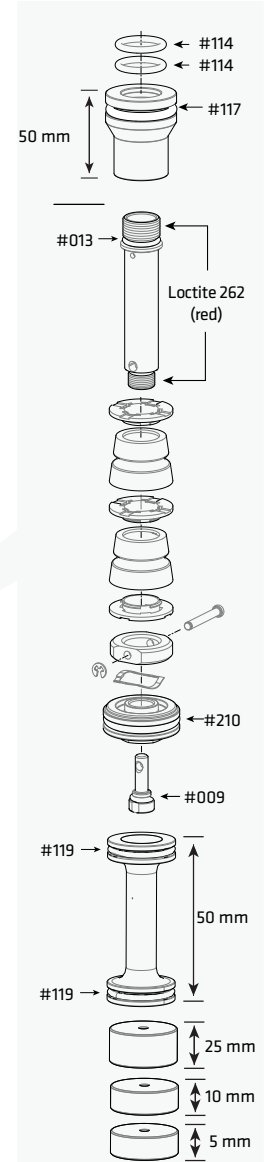
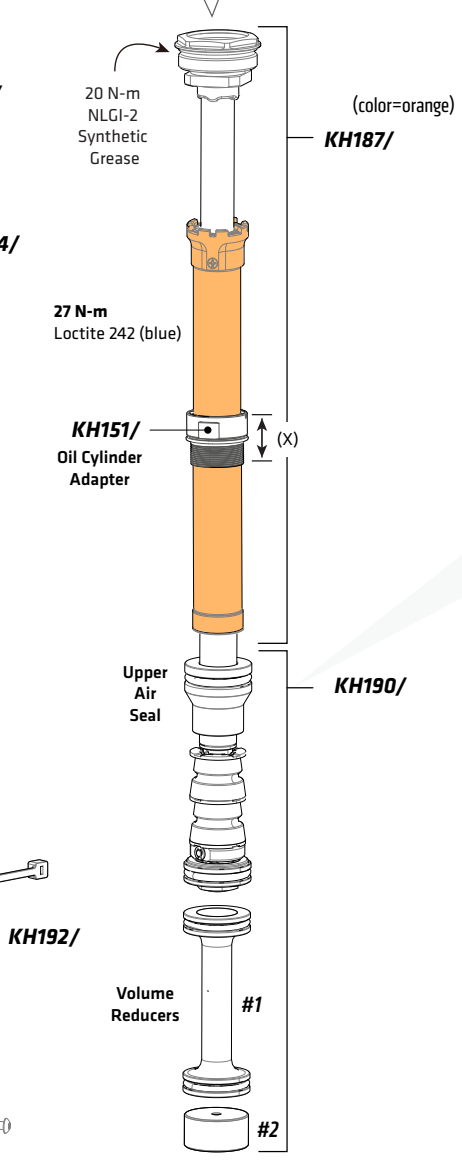
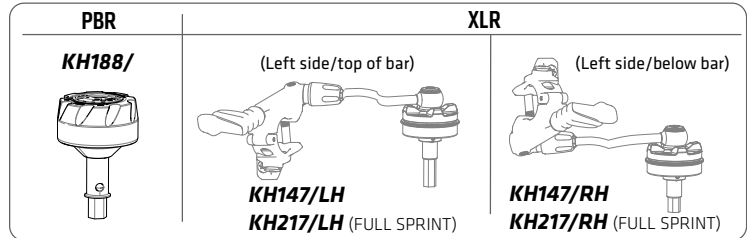
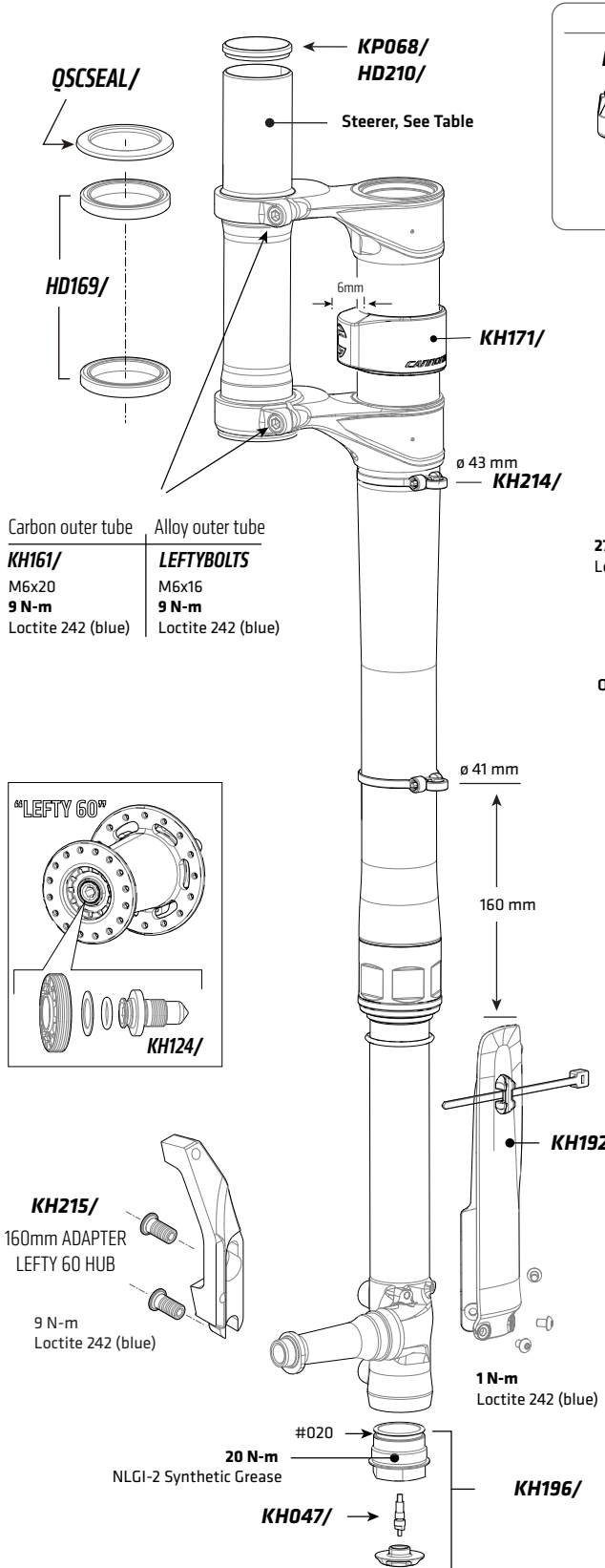


	BIKE SIZE	S	M	L	XL
UPPER AIR SEAL LENGTH		60 mm			
OIL CYLINDER ADAPTER LENGTH (X)		29 mm	42 mm	54 mm	65 mm
#1 VOLUME REDUCER		--	--	50 mm	50 mm
#2 VOLUME REDUCER		10 mm + 5 mm	25 mm + 5 mm	--	10 mm
HEADTUBE LENGTH		97 mm	110 mm	122 mm	134 mm
FRAME BUMPER SIZE		6 mm			

CODE	TELESCOPE	COMMENT
KH214/	KIT,BAND CLAMPS, CABLE GUIDE	Contains multiple clamp types/size , select appropriate. Use 43mm & 41mm.
KH171/	KIT,FRAME BUMPER,LEFTY 6MM	
KH192/	KIT GUARD LEFTY HYB 32 LONG	
KH161/	KIT,CLAMP BOLTS 20mm	For carbon outer tube
LEFTYBOLTS/	KIT,BOLTS,LEFTY CALIPER/CLAMP	For alloy outer tube
KH215/	KIT,ADAPTER, LEFTY 60,160	
CODE	DAMPER	COMMENT
KH187/	KIT DAMPER, LEFTY 2.0, 120, 27	<i>Replacement cartridge also requires: KH146/ and KH151/ And choice of PBR or XLR control : KH149/ or KH147/LH , or KH147/RH</i>
KH189/	KIT SOLO AIR PISTON 120, 27	
KH151/	KIT ADAPT OIL CYLINDER 32 /097/110/122/134	Kit includes multiple adapters, measure headtube to determine correct adapter; DO NOT INTERCHANGE.
KH188/	KIT PBR KNOB	
KH147/LH	KIT XLR LEVER LEFT HAND UPPER	Left H-bar lever, positions top bar
KH147/RH	KIT XLR LEVER RIGHT HAND UPPER	Left H-bar lever, positions lower bar
KH217/LH	KIT XLR LEVER LEFT HAND UPPER	Full Sprint
KH217/RH	KIT XLR LEVER RIGHT HAND UPPER	Full Sprint
KH125/A	KIT,SEALS,100HR TUNE,SUPERMAX PBR/XLR	
KH076/	KIT REDUCER SOLO AIR TUNE	
CODE	STEERER/HEADSET	COMMENT
KH197/097	KIT,STEERER,L20 THICK FLANGE,097	For 97 mm Headtube Length
KH197/110	KIT,STEERER,L20 THICK FLANGE,110	For 109 mm Headtube Length
KH197/122	KIT,STEERER,L20 THICK FLANGE,122	For 122 mm Headtube Length
KH197/134	KIT,STEERER,L20 THICK FLANGE,134	For 134mm Headtube Length
QSCSEAL/	KIT,SEAL,UPPER BEARING,60MM OD	
HD169/	KIT,BEARINGS, HEADSET - 2	includes 2 bearings
KP068/ or HD210/	KIT, STEERER CAP	
CODE	WHEEL HUB	COMMENT
KH124/	KIT,AXLE CAP AND BOLT - LEFTY 60	
KB61805/	INNER HUB BEARING	
KB61902/	OUTER HUB BEARING	
CODE	SERVICE TOOLS	COMMENT
KT020/	KIT, TOOL,LEFTY INSTALL	Install/remove steerer, not pictured
KH127/	KIT, TOOL OUTER CAP 36MM	Install/remove outer cap
KH198/	KIT, TOOL CASTLE SLIDER 40MM	Install/remove damping cartridge
KH135/	KIT,TOOL,SHAFT CLAMP, 16MM	Install/remove air piston assy.
KH136/	KIT,TOOL,BULLET, 16MM	Install upper air seal assy.
KH057/	KIT, TOOL,LEFTY THREAD REPAIR	Repair spindle threads, not pictured
QCTL108/	KIT, TOOL, TRUING AXLE	
KH090/	KIT, TOOL, XLR BLEED	For XLR only

LEFTY 2.0-PBR/XLR 130 27.5"

RECOMMENDED SAG	25-30 mm
TRAVEL LENGTH	130 mm
MANUAL RESET LENGTH	25 mm +/- 3
PRESSURE LIMITS	MINIMUM 50 Psi, MAXIMUM 225 Psi
OFFSET	50 mm
INTENDED USE	ASTM CONDITION 3, XC Cross-Country



BIKE SIZE	S	M	L	XL
UPPER AIR SEAL LENGTH	50 mm			
OIL CYLINDER ADAPTER LENGTH (X)	29 mm	42 mm	54 mm	65 mm
#1 VOLUME REDUCER	--	--	--	50 mm
#2 VOLUME REDUCER	10 + 5 mm	25 mm	25 + 10+5 mm	5 mm
HEADTUBE LENGTH	97 mm	110 mm	122 mm	134 mm
FRAME BUMPER SIZE	6 mm			

CODE	TELESCOPE	COMMENT
KH214/	KIT,BAND CLAMPS, CABLE GUIDE	Contains multiple clamp types/size , select appropriate. Use 43mm & 41mm.
KH171/	KIT,FRAME BUMPER,LEFTY 6MM	
KH192/	KIT GUARD LEFTY HYB 32 LONG	
KH161/	KIT,CLAMP BOLTS 20mm	For carbon outer tube
LEFTYBOLTS/	KIT,BOLTS,LEFTY CALIPER/CLAMP	For alloy outer tube
KH215/	KIT,ADAPTER, KIT,ADAPTER, LEFTY 60,160	
CODE	DAMPER	COMMENT
KH187/	KIT DAMPER, LEFTY 2.0, 120,27	<i>Replacement cartridge also requires: KH146/ and KH151/ And choice of PBR or XLR control : KH149/ or KH147/LH , or KH147/RH</i>
KH190/	KIT SOLO AIR PISTON 130,27	
KH151/	KIT ADAPT OIL CYLINDER 32 /097/110/122/134	Kit includes multiple adapters, measure headtube to determine correct adapter; DO NOT INTERCHANGE.
KH125/A	KIT,SEALS,100HR TUNE,SUPERMAX PBR/XLR	
KH188/	KIT PBR KNOB	
KH147/LH	KIT XLR LEVER LEFT HAND UPPER	Left H-bar lever, positions top bar
KH147/RH	KIT XLR LEVER RIGHT HAND UPPER	Left H-bar lever, positions lower bar
KH217/LH	KIT XLR LEVER LEFT HAND UPPER	Full Sprint, positions top bar
KH217/RH	KIT XLR LEVER RIGHT HAND UPPER	Full Sprint, positions lower bar
KH076/	KIT REDUCER SOLO AIR TUNE	
CODE	STEERER/HEADSET	COMMENT
KH197/097	KIT,STEERER,L20 THICK FLANGE,097	For 97 mm Headtube Length
KH197/110	KIT,STEERER,L20 THICK FLANGE,110	For 109 mm Headtube Length
KH197/122	KIT,STEERER,L20 THICK FLANGE,122	For 122 mm Headtube Length
KH197/134	KIT,STEERER,L20 THICK FLANGE,134	For 134mm Headtube Length
QSCSEAL/	KIT,SEAL,UPPER BEARING,60MM OD	
HD169/	KIT,BEARINGS, HEADSET - 2	includes 2 bearings
KP068/ or HD210/	KIT, STEERER CAP	
CODE	WHEEL HUB	COMMENT
KH124/	KIT,AXLE CAP AND BOLT - LEFTY 60	
KB61805/	INNER HUB BEARING	
KB61902/	OUTER HUB BEARING	
CODE	SERVICE TOOLS	COMMENT
KT020/	KIT, TOOL,LEFTY INSTALL	Install/remove steerer, not pictured
KH127/	KIT, TOOL OUTER CAP 36MM	Install/remove outer cap
KH198/	KIT, TOOL CASTLE SLIDER 40MM	Install/remove damping cartridge
KH135/	KIT,TOOL,SHAFT CLAMP, 16MM	Install/remove air piston assy.
KH136/	KIT,TOOL,BULLET, 16MM	Install upper air seal assy.
KH057/	KIT, TOOL,LEFTY THREAD REPAIR	Repair spindle threads, not pictured
QCTL108/	KIT, TOOL, TRUING AXLE	
KH090/	KIT, TOOL, XLR BLEED	For XLR only