

Datasheet: MakroPorP1.5M1-230

Macro porous silicon lift-off membrane (305868-W06)

Etching

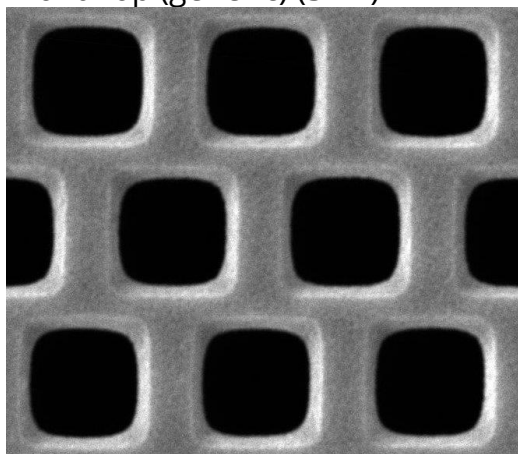
Pitch P:	1.5 μm trigonal
Pore length L:	234 μm
Pore diameter D:	1 μm

Postprocessing

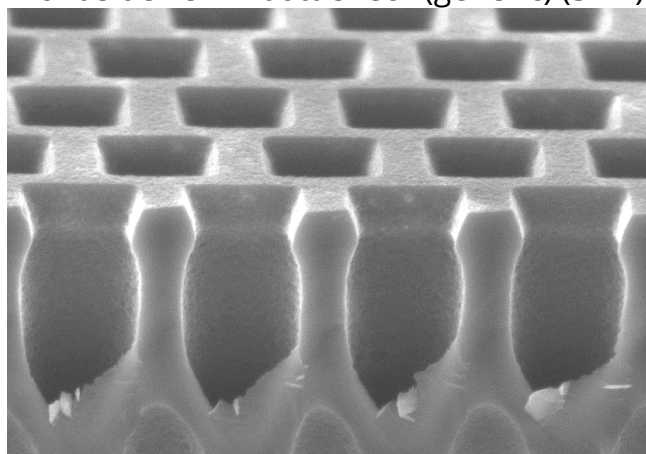
Membrane lift-off
Laser dicing

Images

Front Top (generic) (SEM)



Front sideview + bottleneck (generic) (SEM)



Remarks

lifted backside (generic) (SEM)

- Lifted backsides are sensitive to mechanical handling. Abrasion of silicon nanotips is visible as brown "scratches" on the surface but have minor effect on the underlying pores. **We suggest using vacuum tweezers on the front side.** Depending on the thickness, flat tips with small diameters are preferred instead of suction cup tips, to minimize mechanical Stress.
- Please be aware: Thin membranes may flip due to electrostatic forces while opening or closing transport boxes!

