



ATTREZZATURE TOOLS

Tools ZF IRM 280 A_IRM 280 A1_ZF 280 A_
IRM 280 A2)_ZF 280-1A_IRM 280 PL_ZF 280
IRM 280 PL1_ZF 280-1 MARITIMUS

2.3

www.maritimisspooote.de

SMONTAGGIO E MONTAGGIO
DISASSEMBLY AND ASSEMBLY

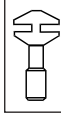


IRM 280 A / IRM 280 A•1 / ZF 280 A (IRM 280 A•2)
ZF 280-1A / IRM 280 PL / ZF 280 (IRM 280 PL•1) / ZF 280-1

ATTREZZATURE / TOOLS

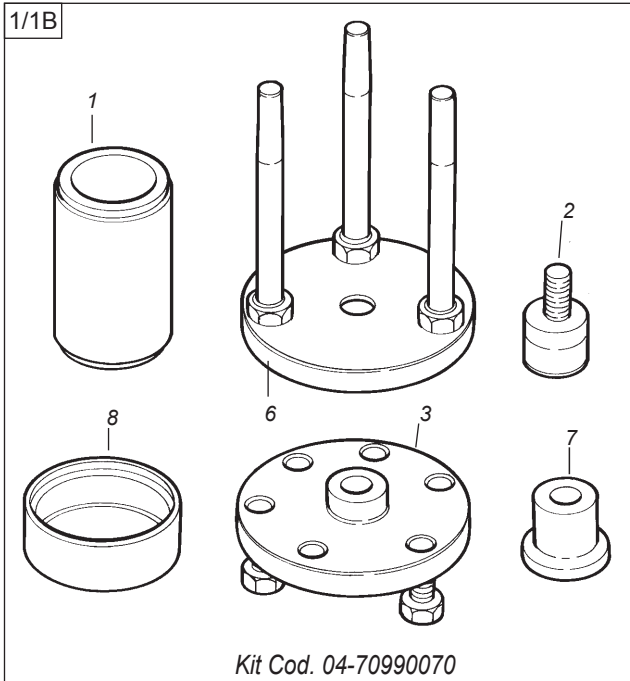
Pos. Pos.	Descrizione / Description	Codice / Codex	Posizione di utilizzo Position of utility		Attrezzature consigliate Suggested Tools
			Smontaggio Disassembly	Montaggio Assembly	
1	Attrezzatura per piantaggio/spiantaggio ingranaggio/alb <i>Tool for fitting/removing the gear and shaft</i>	04-70990070-1÷8	22	37 38	!
2	Kit pompa iniezione <i>Injection pump kit</i>	0742184 + 04-51990309	16B-22 23 - 26	37 38	!
1B	Attrezzatura estrazione albero uscita <i>Tool to remove the output shaft</i>	04-70990070-3-6	16B 26		!
3	Attrezzi smontaggio molla pistone albero MA e RM <i>Tools for disassembly of the piston spring on FWD and REV shaft</i>	04-70990001 04-7099000108	40	3	!
4	Tampone per guarnizione albero entrata <i>Pad for input shaft gasket</i>	04-51600582		65 66	!
5	Tampone per guarnizione albero uscita <i>Pad for output shaft gasket</i>	04-51600581		17	!
6	Attrezzi rilevamento coppia rotolamento cuscinetti <i>Tools for measuring rolling torque of bearings</i>	04-51990624-6 04-51990624-3 04-51990624-7		24-58 27 43	
7	Attrezzo per rotazione alberi <i>Tool to turning shafts</i>	04-51990752		50	!
8	Tampone per ralle cuscinetti alberi MA-RM semicarcassa posteriore <i>Pads for bearing outer races on FWD-REV shaft rear semicasing</i>	04-51600576		16	
9	Tampone per ralla cuscinetto albero uscita semicarcassa posteriore <i>Pad for bearing outer races on output shaft, rear semicasing</i>	04-51600577		16	
10	Tampone per ralle cuscinetti alberi MA-RM semicarcassa posteriore <i>Pads for bearing outer races on FWD-REV shaft rear semicasing</i>	04-51600578		18	
11	Tampone per ralla cuscinetto albero uscita semicarcassa anteriore <i>Pad for bearing outer races on output shaft, front half housing</i>	04-51600579		18	!
12	Tampone per montaggio astuccio rullini su ingranaggio-mozzo MA-RM <i>Pad for fitting roller box on FWD-REV hub gear</i>	04-51600580		7 8	!
13	Attrezzo per rotazione albero uscita <i>Tool to turning output shaft</i>	04-51990738		43	!
14	Staffa per bloccaggio albero uscita <i>Bracket for output shaft</i>	04-70990109		29	
15	Attrezzo posizionamento cuscinetto <i>Bearing position tool</i>	04-70990125		33	

SMONTAGGIO E MONTAGGIO
DISASSEMBLY AND ASSEMBLY

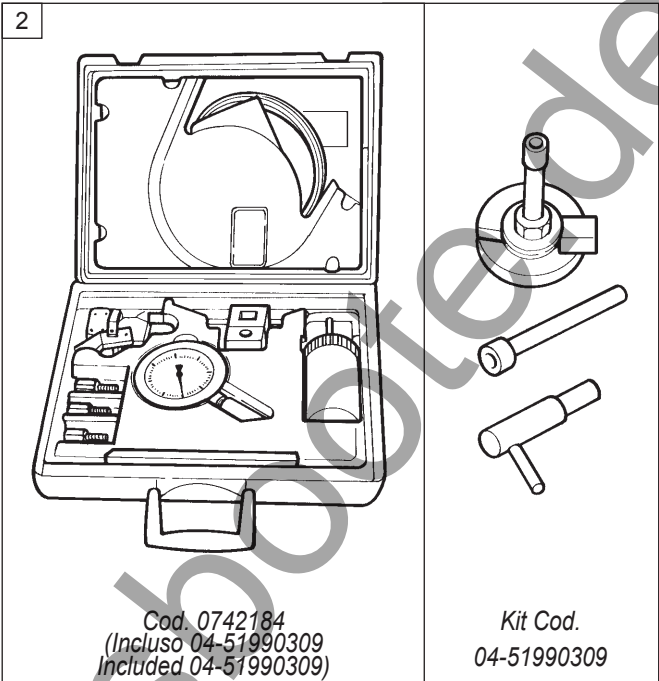


IRM 280 A / IRM 280 A-1 / ZF 280 A (IRM 280 A-2)
ZF 280-1A / IRM 280 PL / ZF 280 (IRM 280 PL-1) / ZF 280-1

1/1B



2



2.3

