

Safety first!

Safety Advices

1) Attention - Always unfold completely!

When in use always ensure that the **SEGautostand** parking leg is completely unfolded and your **SEGWAY** is fully supported in a tilted position.

2) Attention - SEGWAY load balance should always be to the front of the machine!

If your **SEGWAY** is loaded with cargo causing its centre of balance to be shifted more to the rear the **SEGautostand** cannot be safely used to park the **SEGWAY**. In these circumstances another means of parking should be used. (E.g. **SEGWAY X2 Golf**, parking on the golf bag)

3) Attention - Never park on uneven ground!

Make sure that your **SEGWAY** is always parked on smooth and level ground. **SEGautostand** will keep your **SEGWAY** in an upright position but may not prevent it rolling downhill. Please note that the weight of your **SEGWAY** will tend to make it roll downhill. The **SEGautostand** does not prevent the wheels from rotating.

4) Attention - Heavy loading of front bag may cause your SEGWAY to fall over.

If your **SEGWAY** front bag is loaded with heavy cargo (more than 5-6 kg; 12-14 pounds) there may be a risk of your **SEGWAY** falling over, overbalancing on the **SEGautostand** leg. Always remove a heavily loaded front bag when you are parking your **SEGWAY** using the **SEGautostand**. To ensure that the **SEGautostand** leg automatically retracts in use it has been necessary to adopt a short leg design. Safe parking is not possible when heavily loaded bags are in place on the front of your **SEGWAY**. We hope you appreciate the overall benefits of this design when observing the above restriction.

Otherwise please check out our extended products for heavy loaded **SEGWAYS**, where prolonged stands, extended legs and **TWIN** versions are available to park safe even the most heavy loaded **SEGWAY**.

5) Attention - Do not move your SEGWAY while on parking leg!

Do not move your **SEGWAY** with the **SEGautostand** in operation, even if only a few inches. Always allow it to retract first, move the **SEGWAY** and re-apply the **SEGautostand**. Moving or twisting your **SEGWAY** while the **SEGautostand** is in use can cause damage to your **SEGautostand** which will invalidate the warranty.

6) Attention - Never stand on a parked SEGWAY!

Do not stand on your **SEGWAY** while the **SEGautostand** is supporting it. The **SEGautostand** is designed to carry the weight of a **SEGWAY** and the load it is carrying but NOT the weight of a rider too. Standing on the **SEGWAY** when parked using the **SEGauto-**

stand can cause damage to your **SEGautostand** which will invalidate the warranty.

7) Attention - Wear appropriate footwear!

Please ensure you wear appropriate shoes when using your **SEGautostand**. The top surface of the push lever has a rubber surface design in order to give a good grip on the users shoe sole. N.B. Using bare feet or very light shoes could injure you or damage the shoe. For the same reasons do not touch or release the push lever with your fingers.

8) Warning!



The spring tensioned folding mechanism of the **SEGautostand** may cause injury to fingers and hands during installation if care is not taken. Always ensure that when the parking leg is extended and under spring pressure it does not forcibly retract and cause injury.

9) Attention - Only install a SEGautostand on an original SEGWAY PT!

The **SEGautostand** PT i2 and PT x2 are designed to be installed only on an original **SEGWAY** PT i2 or x2. Respectively make sure that your **SEGautostand** model is appropriate for your **SEGWAY** model. Turn down the push lever and you will see the **SEGautostand** name tag.

SEGWAY is a registered trademark of **SEGWAY INC**, Bedford, USA.



The manufacturer accepts no responsibility for any damage or injury caused by not complying with the above warnings and advice or other incorrect use of the **SEGautostand**.

Users Manual

1. SEGautostand in riding position

When riding your **SEGWAY** the **SEGautostand** must remain folded between the fender and the battery cover. It is slightly bigger than the battery bottom cover, but there is no protrusion to reduce your **SEGWAY's** ground clearance. To the rear the operating lever is positioned near to platform level, so that it is easy to reach, but does not exceed the **SEGWAY's** original dimensions. This allows use of the **SEGWAY** up and down stairs, as before, with no mechanical interference with your new **SEGautostand**.

Attention: Replacement wheels with non-original diameters could cause the handle to protrude. When riding your **SEGWAY** the parking leg should be always folded in and in the stand-by position, pressing firmly on the rubber pad on the gearbox body.

Attention: Changed wheel types with non original diameter could cause the handles stand-over.

During drive the parking leg should be always folded in and in stand-by position, kept firmly on the rubber striped gearbox body.

2. SEGautostand in parking position

When used in the parking position the **SEGautostand's** parking leg is extended and will keep your **SEGWAY** safe in upright position on level ground. Your **SEGWAY** is kept in a tilted position to ensure stability and illumination of the red warning lamp so that the balance mode can not be activated. If a rider steps on to the **SEGWAY** while the red lamp is lit the stick-shake alert will be activated. This feature can be compromised if you park your **SEGWAY** on uneven ground.

3. Starting from park position

Take hold of the **SEGWAY's** handlebars as usual and bring it to horizontal position in order to activate the balance mode. About the same time the **SEGWAY's** green signal lamp lights, your **SEGautostand** will fold in the parking leg automatically. Uneven ground or parking on a slope could hinder this action, so always check the parking leg has folded in and the push lever has returned to its uppermost position. In the unlikely event that the leg has not folded you can easily assist the lever upwards with the tip of your shoe. Now you're ready to start riding your **SEGWAY**.

4. Parking your SEGWAY

Step down from the **SEGWAY's** platform and wait until the beep to signal that you can deactivate the balance mode. Deactivate it by a short push on the ON/OFF switch, change to security mode or switch-off completely. You can only use your **SEGautostand** for parking after deactivating balance mode, fully switching off the **SEGWAY** or activating the alarm mode. Press down on the lever on the rear of the **SEGautostand** until the parking leg is fully extended. When it is fully extended lean your **SEGWAY** forward to allow the leg to make contact with the ground and support the **SEGWAY**. Always ensure the **SEGWAY** is fully resting on the parking leg before releasing the handlebar.



Attention! Careful study of all safety advice is essential!

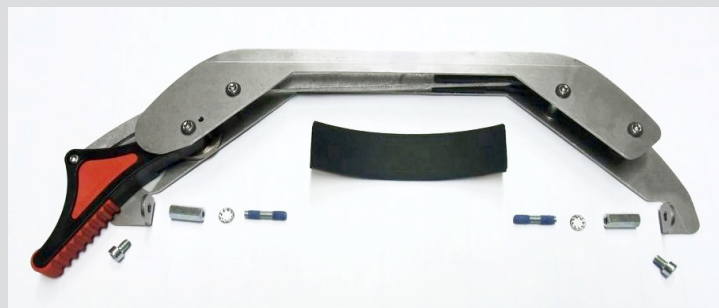
5. Maintaining your SEGautostand

Your **SEGautostand** is mainly made from stainless steel and polyamid, so it is quite resistant to environmental conditions. All bearings are completely grease-free long-life and need no maintenance. Just keep your **SEGautostand** clean with water and soft detergents so that no dirt can interfere with the mechanical actions. That's all!

6. Warrantee

The manufacturer guarantees all components of the **SEGautostand** for 12 months from date of purchase. The date of purchase on authorised dealers invoice is binding. The rubber cap on the end of the parking leg is a consumable item and not covered by this warranty. All damage caused by failure to observe the safety advice or inappropriate use of the **SEGautostand** automatically invalidates the warranty. In these circumstances a customer may receive an estimate of costs before deciding on repair at their own cost. (See Safety Advice, points 4 and 5)

Installation



SEGautostand and set of bolts

Required Tools (not supplied)

To install **SEGautostand** you need the following items:

- 1 Allen key Screwdriver 4mm (metric; long handle version)
- 1 Hexagon Screwdriver 8mm (metric)
- 1 Allen key Screwdriver 2.5mm (metric, long handle version)

Content

- 1 **SEGautostand**
- 2 Threadbolts
- 2 Hexagonal bolts (M5 x 20mm)
- 2 Locking washers (M5)
- 2 screws M5x8 (coated)
- 1 Rubber pad, adhesive (120mm x 30mm)

How to install

1. Lay your **SEGWAY PT** down to lay on the left wheel. The right wheel should be now in the uppermost position. The **SEGautostand** is always mounted on the right side when facing the driving direction.



Lay your SEGWAY on its left side

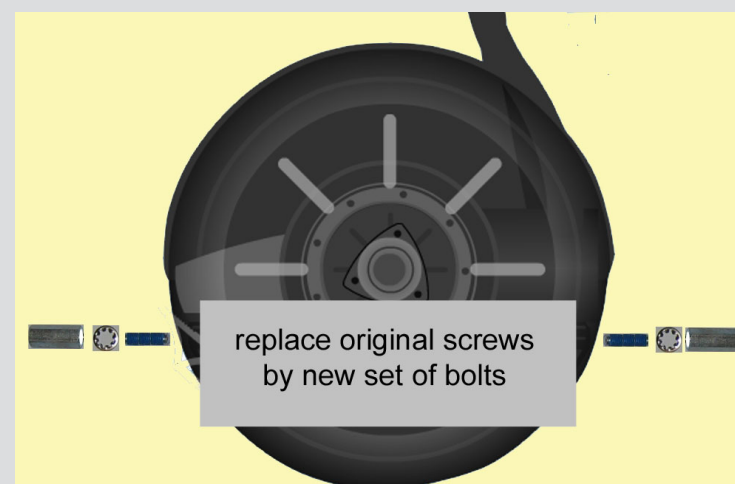
2. Between the battery and right wheel you can now see the black bottom side of black gearbox frame (black and polished surface). Please clean the surface with a wet tissue or some glass cleaner, so that it is free of grease and dirt.
3. Remove the paper cover from the adhesive rubber pad and fix the rubber pad on the black frames surface. The rubber should fit flush to the edge of the black frame next to the wheel. At a later stage the **SEGautostand** will rest on top of that pad.

4. Using the 4mm Allen key screwdriver remove the front and rear screw of the plastic **SEGWAY** body cover. You will find this screw between fender and platform on front and rear of your **SEGWAY**. Keep those screws for your records only. The **SEGautostand** is mounted later on with the new coated screws enclosed.



Fix rubber pad / remove screws

5. Where the above screws have been removed, replace them with a threaded bolt, followed by a locking washer and the hexagonal bolt (M5). The bolt is dressed with locking substance on the thread, so please fit them carefully and allow to set for a few hours, as the locking substance needs a time to harden. (max 10 Nm torque to be applied) There should now be bolts in place where screws were removed and this is where your **SEGautostand** will be mounted (front and rear between fender and platform at the right side when facing driving direction).



Replace screws with threaded bolts, washers & hexagonal bolts



Fit rear screw of SEGautostand first

6. The **SEGautostand** has a front (where the parking leg extends from) and a rear (where the push lever is mounted). Ensure the **SEGautostand** is the correct way round and mount it from underneath the **SEGWAY** in the space between the battery and the right wheel. Your **SEGautostand** should now cover the rubber pad fitted at step 3. Fixing holes should line up with the bolts fitted at step 5.
7. First, fix your **SEGautostand** with the screw on the rear of the platform. Do not tighten fully, as you need to be able to line up the front of the **SEGautostand** beforehand. (It is important to mount the rear of the **SEGautostand** first as you need to use the unfolded leg as handle to achieve the final mounting position, pressing tight against the rubber strip fitted at step 3).



8. Make sure that your **SEGWAY** is firmly located and cannot turn on its wheel. Ensure that you are in a position to insert the front screw to the front bolt. Unfold the parking leg and use it as a handle to press your **SEGautostand** against the rubber strip. Applying firm pressure, align the front mounting hole and fit the remaining screw. Alternatively raise up the **SEGWAY** to its regular parking position before fitting the front screw. Release the **SEGautostand** leg by pressing the backside lever, so that the **SEGWAY** rests on the parking leg and the weight of itself will help you to align the front mounting hole to fit the last screw.

Ensure that your **SEGautostand** still sits on top of the rubber pad (on top of the gearbox) and that it has not slipped to one side. Tighten both screws. Use the new coated screws only (with elastic stop material on the thread).



Apply pressure to parking leg while fixing front screw



Ensure the **SEGautostand** rests completely on the rubber pad

Beware: The parking leg can fold in automatically, ensure your fingers do not get trapped!

9. Check the operation of the folding leg several times. Sometimes as a result of transportation or storing the action can become a little stiff. Should this happen when the **SEGautostand** has been left in its parked position for an extended period simply repeatedly operating the leg action will free up movement.
10. Installation is complete. Please read the users manual and safety advice carefully.

The latest information about installation and use can be found at our website

www.segautostand.com