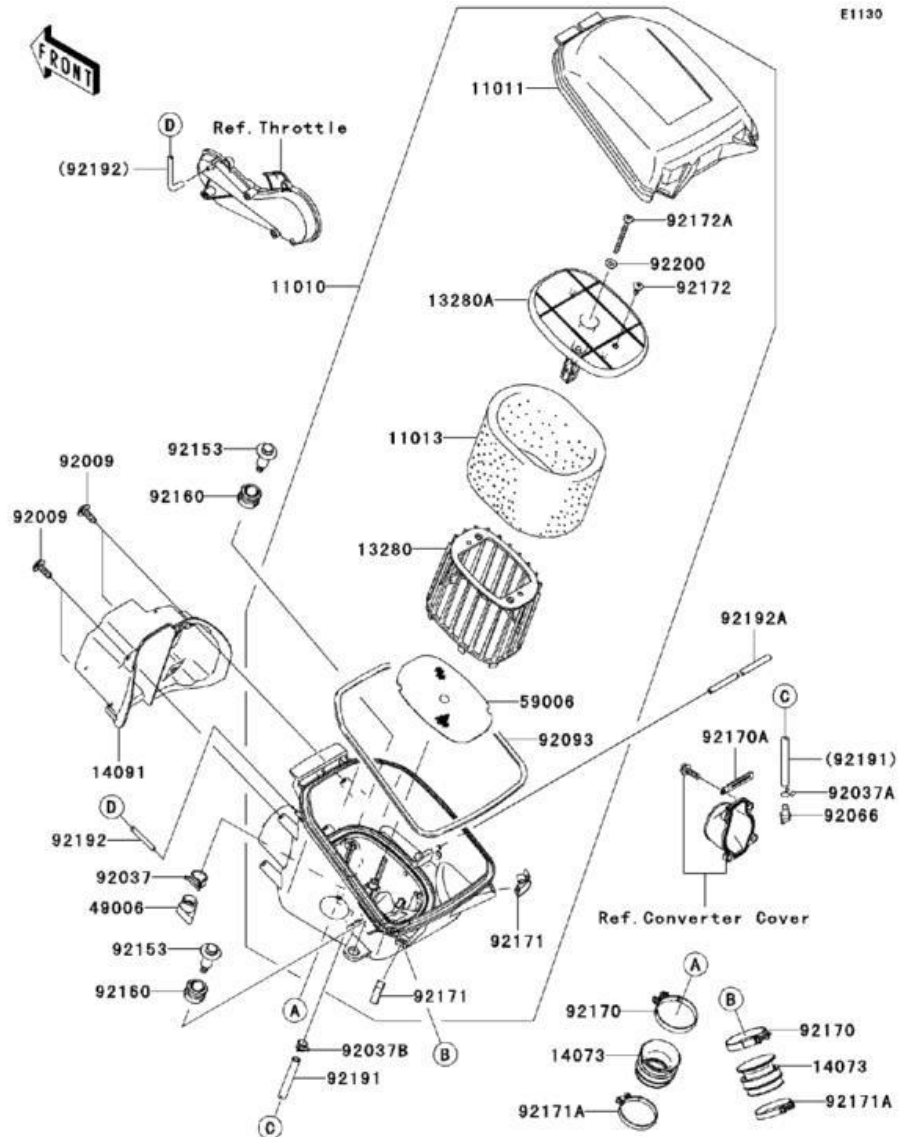


## Part Number 151392C

**PowerFlow Kit Kawasaki Brute Force 750**  
(incl. Air Filter (FR), Wire Cage, Mounting Hardware)

### Instructions:



1. 151392C includes a Twin Air BIO Factory Pre-Oiled Filter, Cage, and wing bolt.
2. Remove stock air filter, cage, cap, and backfire screen.
3. Install pre-oiled air filter onto cage and install cage into air box using the supplied wing bolt to secure.

If you have any other questions feel free to contact us. For contact information go to [www.twinair.com](http://www.twinair.com) or [www.twinairusa.com](http://www.twinairusa.com).



**Twin Air Replacement Parts and Accessories**

- PowerFlow Replacement Air Filter: #151392FR
- Factory Pre-Oiled Air Filter: #151392FRX
- Replacement Oil Filter: #140015

**Twin Air Cleaning and Oiling Products**

- Bio Dirt Remover: #159004
- Liquid Bio Power: #159017
- Bio Pack (Dirt Remover / Liquid Power): #159020
- Bio Spray: #159018M
- Twin Air Bio System: #159000BIO

For more details or to purchase these or other Twin Air products go to [www.twinair.com](http://www.twinair.com), [www.twinairusa.com](http://www.twinairusa.com) or visit your local Twin Air Authorized Dealer.