

Diese Duettstimmen sind zur Ergänzung des Unterrichtswerkes Brassini (Band 1). Mit dem Kauf von Brassini (Band 1) sind Sie berechtigt, die Duettstimmen kostenlos von unserer Homepage herunterzuladen und zu verwenden.

Posaune, Bariton ♭: Euphonium ♭:

Duettstimmen zu den Liedern

für

BRASSINI

Band 1

von

Horst Rapp

Zeichnungen: Georg Koch

© 2004 Rapp-Verlag

Rapp-Verlag Hebelweg 4 D-79410 Badenweiler

Internet: www.rapp-verlag.de E-Mail: info@rapp-verlag.de

Tel. 07632/828283 Fax 07632/828284

Elefantenlied



Teil 1

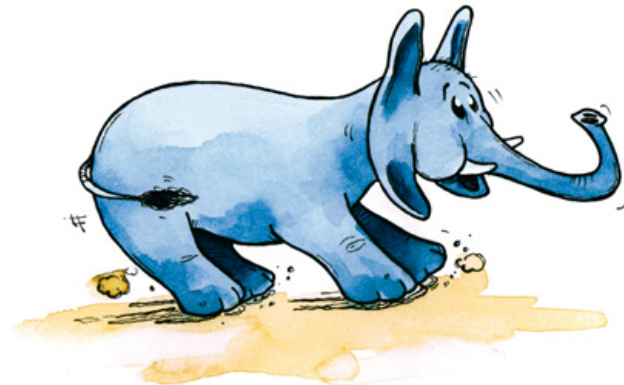
Musical notation for the first part of the song. It consists of two staves in bass clef with a key signature of one flat (B-flat). The melody is on the top staff, and the accompaniment is on the bottom staff. The lyrics are written below the top staff.

E - le - fant kommt ge - rannt.

Teil 2

Musical notation for the second part of the song. It consists of two staves in bass clef with a key signature of one flat (B-flat). The melody is on the top staff, and the accompaniment is on the bottom staff. The lyrics are written below the top staff.

Bleib doch stehn!



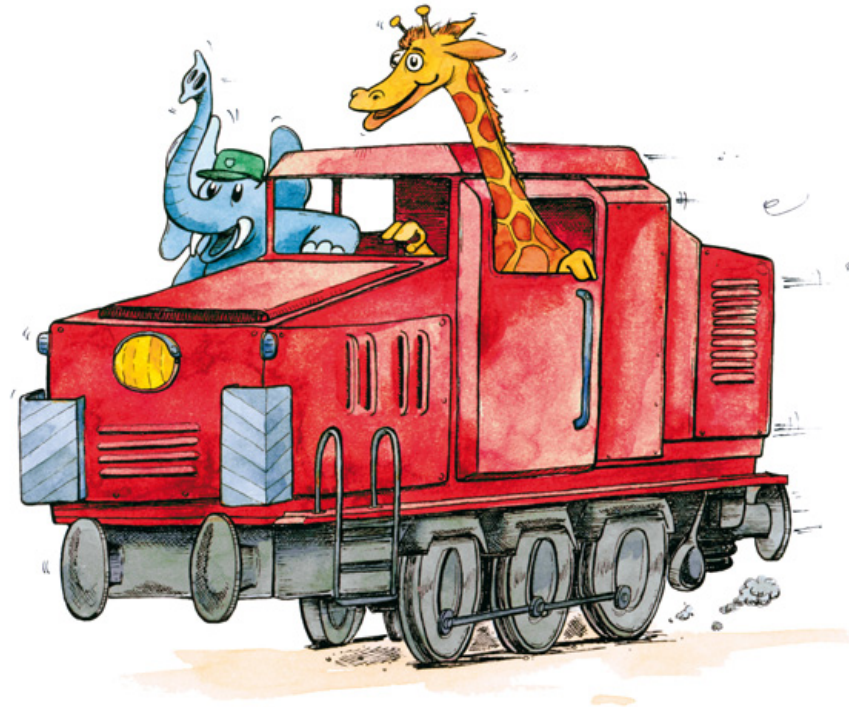
Teil 3

Musical notation for the third part of the song. It consists of two staves in bass clef with a key signature of one flat (B-flat). The melody is on the top staff, and the accompaniment is on the bottom staff. The lyrics are written below the top staff.

Ich möch - te mit dir gehn.



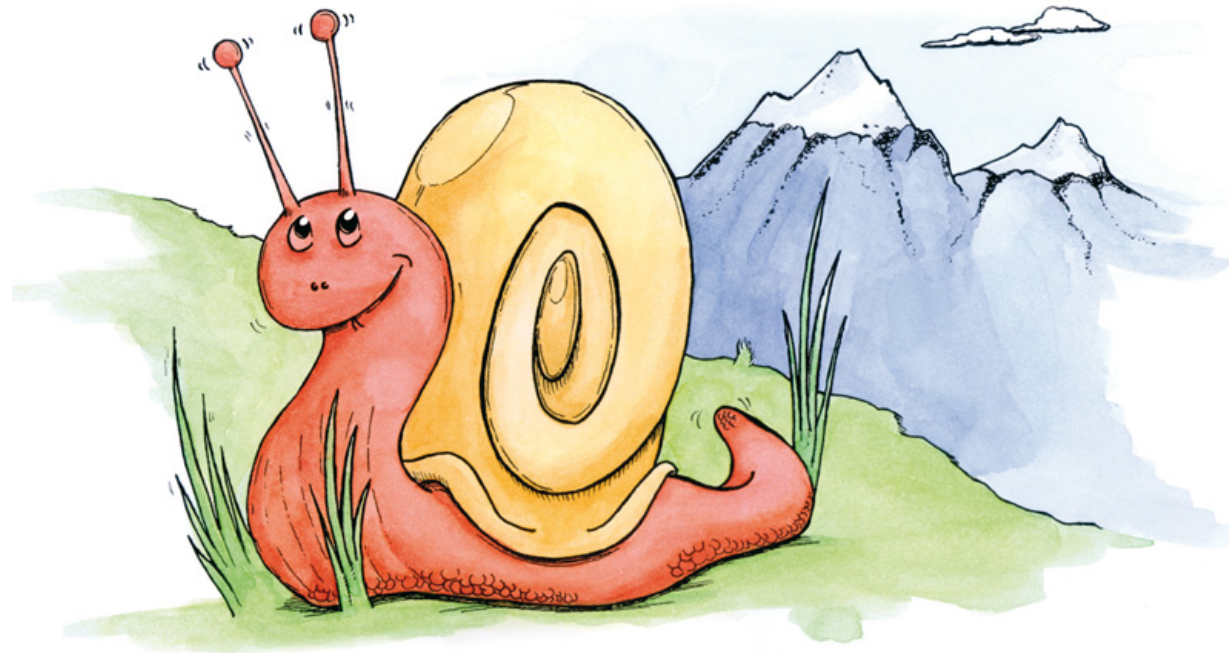
Die Diesellok



Wir fah - ren mit der Die - sel - lok, Lok, Lok, Die - sel - lok.

Musical notation for the song 'Die Diesellok'. It consists of two staves in bass clef with a 4/4 time signature. The melody is simple, using quarter and eighth notes. The lyrics are written below the notes.

Schneck im Haus



Sheet music for the song "Schneck im Haus". The music is written in bass clef, 4/4 time, and B-flat major. The lyrics are: "Schneck im Haus komm her - aus, stre - cke dei - ne Füh - ler aus."

The musical notation consists of two staves. The top staff is the vocal line, and the bottom staff is the piano accompaniment. Both staves are in bass clef and 4/4 time. The key signature has one flat (B-flat). The melody is simple, with a range of one octave. The lyrics are written below the notes.

Eine kleine Maus



Teil 1

Music notation for Teil 1, featuring a vocal line and a piano accompaniment line in 4/4 time, both in a key signature of one flat (B-flat).

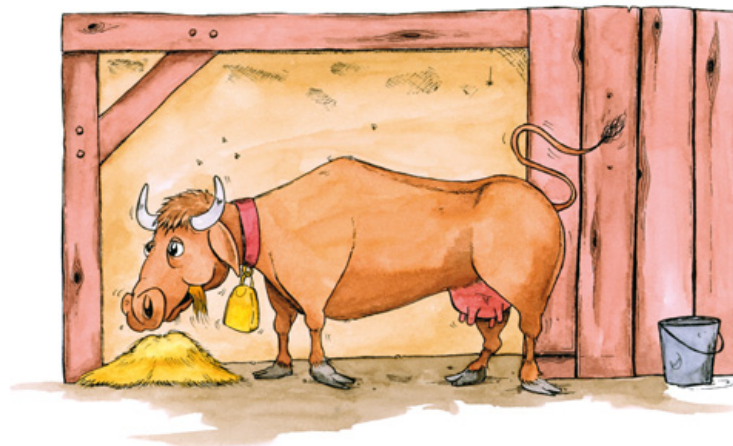
Ei - ne klei - ne Maus sitzt in ih - rem Haus.

Teil 2

Music notation for Teil 2, featuring a vocal line and a piano accompaniment line in 4/4 time, both in a key signature of one flat (B-flat).

Ist gern Käs und Speck, ist schon wie - der weg.

Muh, muh, muh



Teil 1

Musical notation for Teil 1, featuring a bass clef, a key signature of one flat (B-flat), and a 4/4 time signature. The melody is written on a single staff with lyrics underneath. The lyrics are: "Muh, muh, muh, so ruft im Stall die Kuh." The music consists of a series of quarter and half notes.

Teil 2

Musical notation for Teil 2, featuring a bass clef, a key signature of one flat (B-flat), and a 4/4 time signature. The melody is written on a single staff with lyrics underneath. The lyrics are: "Wir ge - ben ihr das Fut - ter, sie gibt uns Milch und But - ter." The music consists of a series of quarter and half notes.

Klingeling



Musical score for the song "Klingeling". The score is written in bass clef, 2/4 time, and B-flat major. The lyrics are: "Klin - ge - ling, schaut al - le her, Fahr - rad - fah - ren ist nicht schwer."

Staff	Measure 1	Measure 2	Measure 3	Measure 4	Measure 5	Measure 6	Measure 7	Measure 8
Melody	G2	A2	B2	C3	D3	E3	F3	G3
Lyrics	Klin -	ge -	ling,	schaut	al -	le	her,	Fahr -
Melody	G2	A2	B2	C3	D3	E3	F3	G3
Lyrics	rad -	fah -	ren	ist	nicht	schwer.		

Indianerlied



Teil 1

Sheet music for Part 1 of the song. It consists of two staves in bass clef, 4/4 time, with a key signature of one flat (B-flat). The melody is written on the top staff, and the lyrics are written below it. The bottom staff contains a simple accompaniment.

In - di - a - ner hei - ßen wir, aus fer - nen Län - dern sind wir hier.

Teil 2

Sheet music for Part 2 of the song. It consists of two staves in bass clef, 4/4 time, with a key signature of one flat (B-flat). The melody is written on the top staff, and the lyrics are written below it. The bottom staff contains a simple accompaniment.

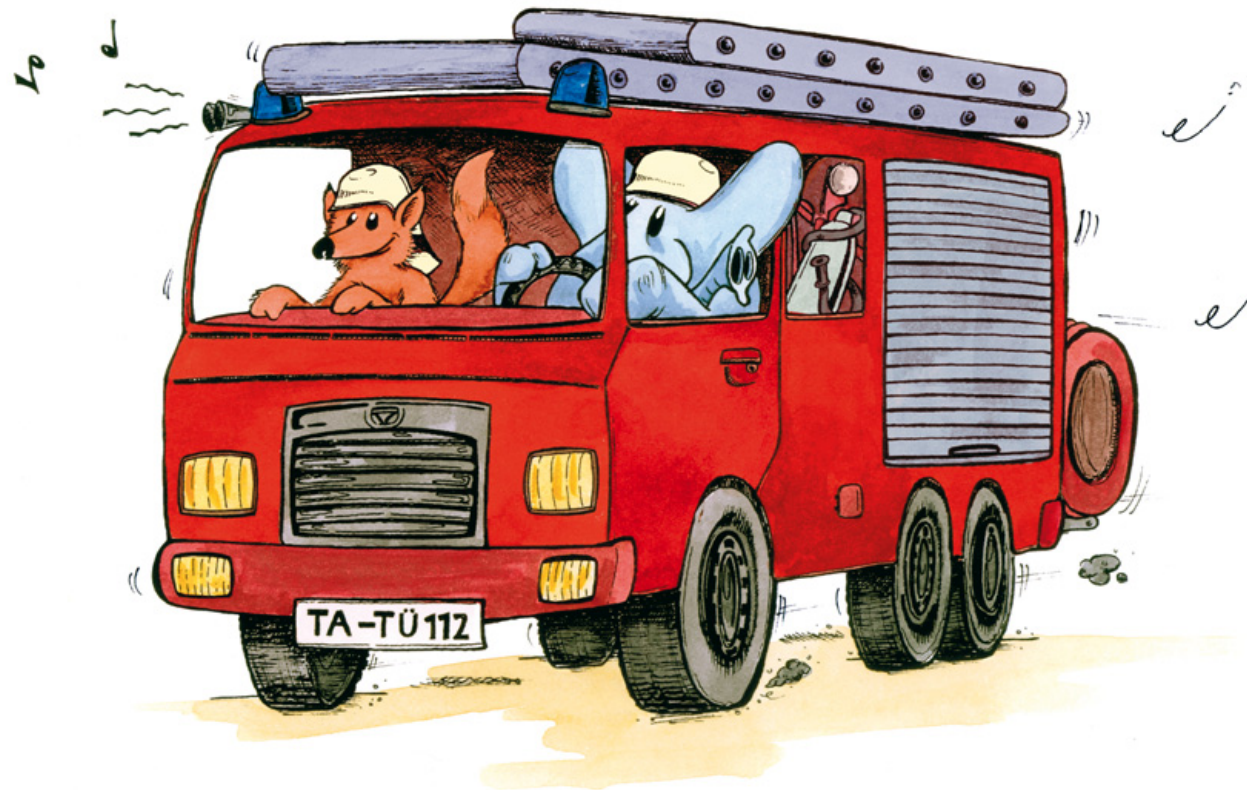
Zei - gen euch mit Schild und Lanz', den wil - den In - di - a - ner - tanz.

Das Schlossgespenst



Wer ver - steckt sich dort im Eck? Das Schloss-ge - spenst, oh Schreck!

Ta-Tü Ta-Ta



Musical notation for the song "Ta-Tü Ta-Ta". The notation is in bass clef, 4/4 time, and B-flat major. The melody consists of quarter notes and a half note. The lyrics are: Ta - Tü Ta - Ta Ta - Tü Ta - Ta, die Feu - er - wehr ist da.



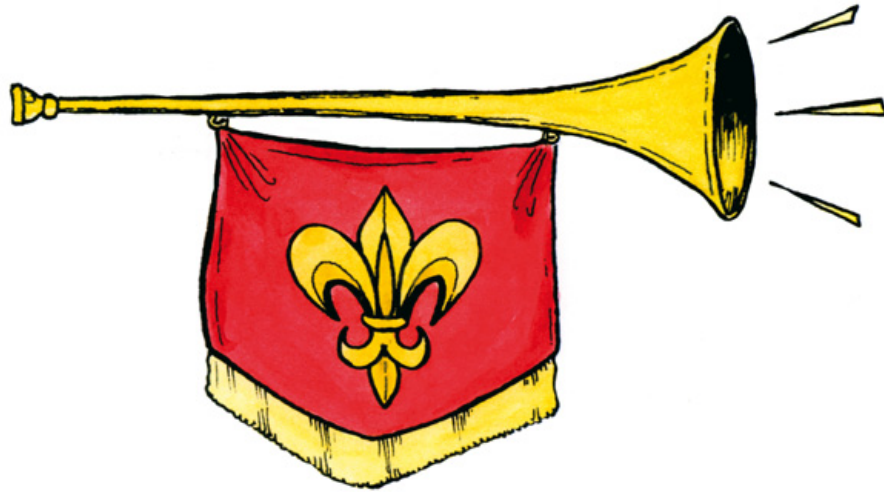
Heute fahr'n wir Karussell

Teil 1

Heu - te fahr'n wir Ka - rus - sell, a - ber bit - te nicht so schnell.

Teil 2

Ich hab' ei - nen Luft - bal - lon, der fliegt mir sonst noch da - von.



Zwei Fanfaren

1.

Musical notation for the first fanfare. It consists of two staves in bass clef with a 4/4 time signature. The key signature has two flats (B-flat and E-flat). The melody is: G2 (quarter), A2 (quarter), B2 (quarter), C3 (quarter), D3 (quarter), E3 (quarter), F3 (quarter), G3 (half). The bass line is: G2 (quarter), A2 (quarter), B2 (quarter), C3 (quarter), D3 (quarter), E3 (quarter), F3 (quarter), G3 (half).

2.

Musical notation for the second fanfare. It consists of two staves in bass clef with a 4/4 time signature. The key signature has two flats (B-flat and E-flat). The melody is: G2 (quarter), A2 (quarter), B2 (quarter), C3 (quarter), D3 (quarter), E3 (quarter), F3 (quarter), G3 (half). The bass line is: G2 (quarter), A2 (quarter), B2 (quarter), C3 (quarter), D3 (quarter), E3 (quarter), F3 (quarter), G3 (half).

Schreckliche Drachen



Teil 1

Sheet music for Teil 1, featuring a vocal line and a bass line in 5/4 time, B-flat major.

Tief un - ten im Berg hau - senschreck - li - che Dra - chen.

Teil 2

Sheet music for Teil 2, featuring a vocal line and a bass line in 5/4 time, B-flat major.

Spei - en Feu - er und Rauch, um den Schatz zu be - wa - chen.

Dackellied

Teil 1

Musical notation for Teil 1, featuring a vocal line and a piano accompaniment line in 4/4 time, B-flat major. The lyrics are: Krum- me Bein - chen und Ge - wa - ckel, das ist O - pas Lang-haar - da - ckel.

Teil 2

Musical notation for Teil 2, featuring a vocal line and a piano accompaniment line in 4/4 time, B-flat major. The lyrics are: Kläfft und bellt und macht Ra - dau, springt und hüpf t mit Wuff und Wau.

Teil 3

Musical notation for Teil 3, featuring a vocal line and a piano accompaniment line in 4/4 time, B-flat major. The lyrics are: Von dem Tisch 'ne Wurst sich schnappt, doch hat O - pa ihn er - tappt.

Hokuspokus



Ho - kus - po - kus fi - di - bus, Frö - sche - bein und Ko - kos - nuss,

A - bra - ka - da - bra drei - mal schwar - zer Ka - ter.